

Business Information Management

Dr. Vladlena Benson; Kate Davis



Download free books at

bookboon.com

Benson V., Tribe K.

Business Information Management



Business Information Management

1st edition

© 2008 Benson V., Tribe K. & bookboon.com

ISBN 978-87-7681-413-7

Contents

Preface	7
Goals and Philosophy:	7
Key Features:	7
1 Introduction to Information Management	9
1.1 Data and Information	9
1.2 Organising Data	10
1.3 Information Everywhere	13
1.4 Strategy and Information Systems	15
1.5 Data Processing Software in an Enterprise	18
1.6 Summary	19
1.7 Review Questions	19
1.8 Case Study: Walmart Harnesses RFID Technology to Improve Efficiency	20
2 Relational Data Model and SQL	23
2.1 Scenario – Dream Destinations	23
2.2 The Relational Model	23

www.sylvania.com

**We do not reinvent
the wheel we reinvent
light.**

Fascinating lighting offers an infinite spectrum of possibilities: Innovative technologies and new markets provide both opportunities and challenges. An environment in which your expertise is in high demand. Enjoy the supportive working atmosphere within our global group and benefit from international career paths. Implement sustainable ideas in close cooperation with other specialists and contribute to influencing our future. Come and join us in reinventing light every day.

Light is OSRAM

**OSRAM
SYLVANIA**



2.3	The SELECT statement	34
2.4	Exercises	37
2.5	Summary	40
3	Data Definition in SQL	41
3.1	Data Definition Language (DDL)	41
3.2	Data Manipulation Language (DML)	44
3.3	Exercises – DDL and DML activities	45
3.4	Summary	47
4	Advanced Selection Queries	48
4.1	Ordering results	48
4.2	Selecting Specific Rows	50
4.3	Exercises – Order As and Selection	54
4.4	Summary	56
5	Joining Tables	57
5.1	Cartesian Product	57
5.2	Exercises – Join, Selection and Projection	60
5.3	Summary	63



Discover the truth at www.deloitte.ca/careers

Deloitte.

© Deloitte & Touche LLP and affiliated entities.



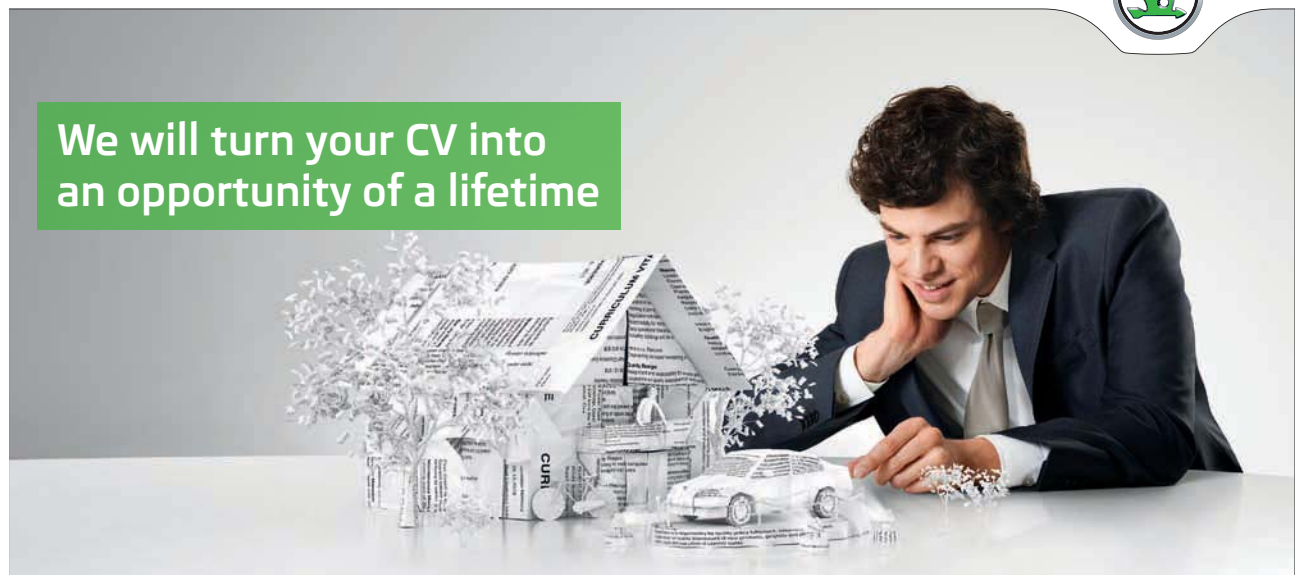
6	Functions, Aggregate and Group-set Functions	64
6.1	Functions	64
6.2	Aggregate Functions	67
6.3	Nested Sub-queries	68
6.4	Exercises	69
6.5	Summary	70
7	Information Security Management	71
7.1	Introduction	71
7.2	Internet Security Threats: Known, Unknown and Predicted	74
7.3	Brand Protection on the Internet	78
7.4	Compliance Issues	81
7.5	Frameworks for Control and Security: COBIT®, ITIL®, and ISO 27002	83
7.6	Exercises	87
	References and Further Reading	89

SIMPLY CLEVER

ŠKODA



We will turn your CV into
an opportunity of a lifetime



Do you like cars? Would you like to be a part of a successful brand?
We will appreciate and reward both your enthusiasm and talent.
Send us your CV. You will be surprised where it can take you.

Send us your CV on
www.employerforlife.com



Download free eBooks at bookboon.com



Click on the ad to read more

Preface

Goals and Philosophy:

Information management is vital for today's businesses. It requires significant investment and supports critical business processes. With the proliferation of the information economy and information systems, effective information management determines success of virtually every business operation. Obtaining business value from vast amount of information collected by businesses is no longer only a technological challenge. The choice of decision making tools and information solutions rests with the business, as well as with IT managers.

The aim of this book is to assist managers in becoming knowledgeable decision makers in the field of information management and analysis. Why do managers need to understand and participate in forging information strategy of their business? Do they need to be aware of what tools are available to transform information into business intelligence for decision making? After all, it is possible to completely outsource information management processes to a third party. Managers who choose to hand over information analysis solely to technical professionals jeopardise the foundation of their business decisions. Managers today need to be aware of current information analysis methods as well as the latest technology in the information management field to enhance productivity and stay ahead of competitors. This textbook covers methods of information analysis using relational databases written for current and future managers. The text finishes with an overview of current threats to business information assets and approaches to their mitigation.

Key Features:

Each chapter provides a comprehensive coverage of relevant theory concepts followed by review questions, and/or case studies and worked examples. Many practical examples are included to illustrate the data analysis concepts. These exercises should help students acquire hands on skills, prepare for assessment and solve types of problems encountered in employment. The book is supported by:

- A downloadable versions of the database files used in this book
- Further exercises
- Solutions for instructors

Starting with a general introduction to information management the text takes the reader through the essential concepts of data analysis in Microsoft™ Access 2007. It presents an overview of the relational data model and data management using SQL. The data analysis chapters start with the preliminary concepts of database organisation and a gentle introduction to basic SQL. Further chapters introduce more advanced concepts of built-in functions, joining information from several tables and nested queries. We conclude with an overview of information security issues which represent significant challenges to businesses today.

Chapter 1 provides a general introduction into the area of information management and various information technology applications across business functional areas. This chapter will help identify how an information management solution can support and improve business processes in an organisation.

In Chapter 2 we describe the relational database model. This introductory chapter provides an overview of the origins of relational databases. It covers the basics of relations, entities and their attributes. Hands-on data analysis activities guide learners through functionality offered by commercial databases, such as Microsoft Access 2007. This chapter will aid in gaining an understanding of how Access can be used within workplace. It highlights SQL syntax and demonstrates the process of building basic queries in SQL. The hands-on exercises in this and further chapters are based on a business case of a holiday booking company DreamDestinations. Chapters 2 through 6 require download of the following database file:

SQLLabSessions.accdb

The **SQLLabSessions** database contains four tables, PROPERTY, OWNER, CLIENT and BOOKING.

- property is a table containing property to be rented out information such as property number, street, country, rental cost and the yearly income.
- owner is a table containing the details of the owners of the properties.
- client contains the details of people who want to rent the properties.
- booking contains the details of clients who have booked a stay at a property.

In Chapter 3 we introduce concepts of more complex data operations in a relational database. We cover data manipulation as well as data definition language. In addition to data retrieval learners acquire skills of creating database tables, changing their structure and entering data using SQL.

Chapter 4 shows how to manipulate and extract certain information from the database using more advanced SQL queries. This chapter covers ordering of query results and selection of records based on conditions.

Chapter 5 focuses on how data can be retrieved from two and more database tables. Means of expressing a join of two tables in SQL are explained in detail using worked through examples.

Chapter 6 focuses on data retrieval using more advanced SQL queries. These cover the use of aggregated and built in functions, as well as arithmetic expressions supported by Access 2007. Important capabilities of SQL such as nested queries are discussed in this chapter.

Having completed the discussion of information storage, entry and retrieval it is essential to address the implication of the fast growing quantities of information businesses collect in their databases. Chapter 7 provides an introduction into some essential information security developments today. This chapter is based on the discussion of several security and control frameworks that are paramount for success in information driven organisations. The text concludes with an outlook into the area of managerial issues surrounding information security in an enterprise and online brand management.

1 Introduction to Information Management

Today business organisations create and use vast quantities of information as never before. Information has become a valuable asset to businesses. Information supports day-to-day business operations, decision making and almost any business function in a business firm. Enterprises invest in information technology as they have proven to deliver an economic value to the business. This economic value can be expressed through an increase in competitiveness, higher productivity, increased revenue, etc.

If information presents value, it can be considered an asset. Although one cannot feel, smell or touch information, it is a critical element to almost any modern business. Information can be an asset or a liability, depending on the adopted information strategy or external factors. For example, pharmaceutical companies are subject to stringent government legislation. They make significant information technology investments simply to stay in business. Masses of clinical data needs to be stored and managed to comply with regulatory requirements. On the other hand, storing too much or too little information could cause an adverse effect on a business. Sales information is an obvious asset for decision making and business growth, however storing information without proper analysis turns into a liability.

1.1 Data and Information

The notion of information is the basis for building an effective understanding of the place that information systems occupy within a business and more widely within the knowledge economy. It is especially important to understand distinctions between data, information and knowledge and realise how they help organisations achieve their business objectives.

Let us get back to basics and consider a few fundamental terms. Businesses collect and store all sorts of data, whether they are necessary facts about their daily operations, customers, or products. Raw, unprocessed streams of facts are usually referred to as *data*. Entries of numbers, text, images or other forms of computerized output are considered data. Raw data, however, is a relative term as data processing may have a number of stages, so the output from one processing stage can be considered to be raw data for the next. After, data is processed and shaped in a meaningful form useful to a person or computer, it turns into *information*.



Figure 1. Data vs. Information: Sales Receipt to Sales Forecast.

The difference between data and information is determined mainly by how they are used in a business context. An individual entry on a sales receipt, which has a product name, quantity and price, does not become “informative” to the business unless it has a purpose or a meaning. For example, the fact that three cans of curry sauce have been sold at a grocery store, may not be very useful to many. However, the difference between data and information becomes clearer when data is transformed into information for a business purpose. For example, sales entries of the same curry sauce are analysed per quarter and this information becomes useful to compare quarterly sales to the target figures. When individual data entries are processed some utility value or meaning is added to raw data to transform it into business information.

1.2 Organising Data

In order to be useful to business and effectively support business processes, data used throughout a business is organised using a *data model*. A data model provides a set of principles for organising data. Generally, data items are arranged into a hierarchy comprising of data elements and data structures. A data item is considered to be atomic or the simplest element of data organisation that cannot be divided any further. For instance, in a data model for organising customer records it is not recommended to keep names of individuals as a single data item. It is typical to have separate data items for first and last names of an individual, i.e. to keep each element as simple as possible. At a first glance at data (see figure 2) it may not be obvious that name records such as Jackson Taylor and Taylor Jackson are not the same.

Name	Last Name First Name	
Jackson, Taylor	Jackson	Taylor
Taylor, Jackson	Taylor	Jackson

Non Atomic Data Item Two Atomic Data Items in a Data Model.

Figure 2. Choice of Data Model Elements.

The hierarchical nature of a data model is based on the fact that a data element is grouped of data items and consequently a data structure is a logical collection of data elements.

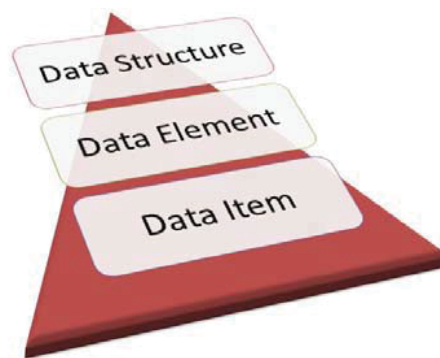


Figure 3. Constructs of a Data Model.

For decades the most popular data model used for data storage within organisations has been file-based. In this data model logically organised constructs of fields (data items), records (data elements) and files (data structures) are used to organise data. In context of a file-based model a record can be considered a data element. The structure (or so called *syntax*) of a typical record comprises of a set of data items that generally represent a meaningful entity. For example, businesses typically store their customer data. A customer record may consist of data items such as customer name, address, contact telephone number, etc. A collection of customer records form a data structure stored in a file. Organising records together in a specific file means that there exists some sort of a relation between data elements. For example, a particular business organisation stores data about its customer orders in a file-based form. Various order records may be stored in different files to create categories that are meaningful. For instance, individual files may contain order records placed in different years or handled by different sales consultants. Therefore a particular data model itself adds some sort of meaning to the data.

In a data model individual data item is characterised by some sort of a format, typically referred to as its *data type*. Data type indicates not only acceptable form of a data item, but also its format and possible range. Furthermore, data type declares the appropriate operations that are possible on a data item. For instance, a typical data item in a customer record data structure is a telephone number. The data type choice for this item may be difficult. If we declare it to be an integer, in many cases the first zero in the telephone number may be lost. However, if we declare it to be a string of characters, then it will be possible to store not only the digits, but additional characters such as “(“ ”) indicating where the country code is placed in the number. A string data type will allow storing of additional non numeric characters. However this may make sorting telephone numbers by area code challenging as values + (44)2075646 and 02075646 are equivalent.

Over the years a series of standard data types have emerged. Data types commonly used by business information systems include numbers, text, date and time and others. Standard data types, such as text – a series of characters composed of characters from the alphabet and other symbols, numbers – integer, decimal, float and other types of numbers, and time including dates, seconds, minutes and hours, are among most commonly used in business information systems. Computers and other electronic devices store data using strings of characters coded based on a standard character set. Although invisible to an average computer user, encoding character set represents a standardised coding scheme. For instance, text consists of symbols or letters, each letter or punctuation mark has a corresponding sequence of symbols from the encoding set uniquely representing this text element for hardware and software manipulation. ASCII – American Standard Code for Information Interchange – has become a default standard character sets used on most personal computers and workstations. The ASCII coding scheme, based on the English alphabet, provides encoding for 128 symbols. In ASCII the capital A is represented by the binary string or word 10100001. Although it is difficult to imagine that a few decades ago computers supported only English alphabet, most modern internationalised encoding standards evolved based on ASCII.

I joined MITAS because
I wanted **real responsibility**

The Graduate Programme
for Engineers and Geoscientists
www.discovermitas.com



Month 16
I was a construction
supervisor in
the North Sea
advising and
helping foremen
solve problems

Real work
International opportunities
Three work placements





In recent years it became impossible to store data only in standard data types. Modern information systems have to cope with multimedia such as graphics, audio and video data. This led to the development of new data types to allow encoding of a wider range of data in digital form. For example, data elements of a photographic image are pixels. In fact the term *pixel* originated from *picture element*. Typically a good 4 by 6 inch print requires an image resolution of at least 800 by 1200 pixels, what is essentially a grid of individual pixels each with its own colour code and other properties. To devise a data structure for storing images we need to consider pixels as individual data elements with data items containing colour corresponding to each pixel. Although quite a straightforward to visualise, it is not the most efficient data structure to store and many image compressing techniques have been developed to minimise the hard disk space occupied by multimedia data.

Whether we are considering text, numbers or multimedia, data has to be represented in some way for storage using computer hardware. Data in its various types are stored by hardware using binary representation. A unit of the quantity of data stored is typically expressed using bits. Eight bits make up a byte, which we are more accustomed to by now. Over the years capacities of hardware used in modern computing have grown exponentially and will continue to do so. Typically hardware storage capabilities are expressed in kilo-bytes, mega-bytes and giga-bytes:

- Kbytes: 1 thousand bytes – 10^3 ,
- Mbytes: 1 million bytes – 10^6 ,
- Gbytes: 1 billion bytes – 10^9 .

1.3 Information Everywhere

Where is information which makes the business run? Well, the answer is *probably everywhere*. Information can be in a variety of forms and is stored in various channels. Almost any business is now operating a database – a structured approach to information storage. The corporate database often becomes the centre of business operations and decision making. Some or all of the business areas can draw on the information stored in the central database as shown in fig.4.

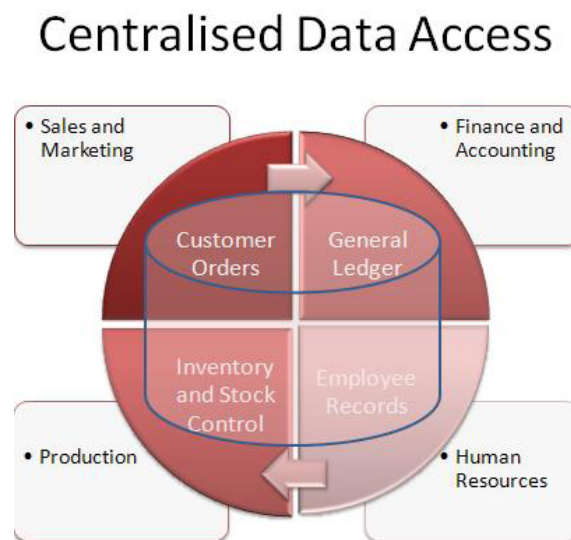


Figure 4. Database at the centre of business functions.

The Sales department stores data about customer orders. Finance and Accounting use sales data to generate invoices and process payments. The Marketing department draws on the customer data and sales information for effective marketing campaigns. Human Resources store information about company employees, their skills and professional development needs. The central database facilitates keeping track of stock and production levels for manufacturing and production areas of business. Centralised information helps even a small business run effectively and rely on real-time information.

Although most think of a database as the main source of information in a business, a significant amount of information is actually unstructured and decentralized. Unstructured data sources include documents, spreadsheets, emails, presentations, intranet and web pages. Information is sometimes said to be distributed across different sources and areas of business. Decentralised information is located on employees' laptops, mobiles, desktops, personal devices spread across departments, local and regional offices. The figure below summarises most of the channels of business information.

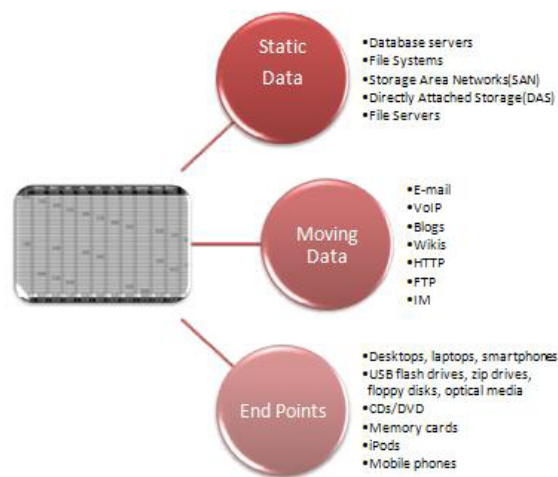


Figure 5. Where is Data in an Enterprise?

In many organisations data sources have a tendency to exist separately. Employees of different departments may have developed their own ways in keeping track of data, but as this process continues for a significant time, decentralised data may impose some problems. Without an organisation-wide plan and data administration procedures in place business may encounter such problems as:

- **Data redundancy** – whereas data becomes duplicated and stored at several locations in more than one file.
- **Poor Data Availability** – data becomes isolated and available only to the owner of a particular file in a file system. Sharing of data and its visibility to employees becomes reduced.

- **Poor Data Security** – data spread across business in various forms and locations reduce the ability of a business to set proper security controls and ensure authorised access to information.
- **Error-Prone Data** – when same data exists at multiple locations it become more vulnerable to human errors introduced by different employees and mistakes tend to go unnoticed for longer.

1.4 Strategy and Information Systems

Traditionally business organisations are divided into three levels. These are *operational*, *management* and *strategic* levels. They exist in nearly all businesses irrespective of their size or sector of operations, although in small companies some levels may converge.

At the *operational level* decisions are made to ensure smooth running of operational processes or day-to-day business. At this level it is necessary to oversee that resources are used efficiently, inventory is up to date, production levels are as planned, etc. Decision making at this level requires information almost entirely internal to the company, although it may be extremely detailed and real-time.

ie business school

#1 EUROPEAN BUSINESS SCHOOL
FINANCIAL TIMES 2013

#gobeyond

MASTER IN MANAGEMENT

Because achieving your dreams is your greatest challenge. IE Business School's Master in Management taught in English, Spanish or bilingually, trains young high performance professionals at the beginning of their career through an innovative and stimulating program that will help them reach their full potential.

- Choose your area of specialization.
- Customize your master through the different options offered.
- Global Immersion Weeks in locations such as London, Silicon Valley or Shanghai.

Because you change, we change with you.

www.ie.edu/master-management | mim.admissions@ie.edu |



Information for decision making at *management level* has a typical timeframe ranging from weeks to several month or a year. Middle management usually controls medium term scheduling, forecasting and budgeting operations. These rely on internal as well as occasional external information. For instance, setting the quarterly budget requires the knowledge of current expenditure as well as external pricing information.

Senior management will focus on general, or *strategic*, issues related to overall business development in the long term. At this level decisions tend to relate to issues with long term such as restructuring, major financial investments and other strategic undertakings related to company's future rather than present. Information necessary for decision making at this level is comprehensively gathered not only from the internal sources of the company itself, but also involves external information, such as data related to economic situation or sectors as a whole.

Businesses that heavily rely on information develop an information strategy to establish how to manage information for business advantage and to comply with government regulations. An *Information Strategy* is a planning document usually created at the strategic level by the Chief Information Officer (CIO), possibly together with a Chief Technology Officer (CTO) and IT manager.

An information strategy is developed to support the overall business strategy of an organisation and explains how information should be captured, processed, used and disposed of throughout its lifecycle. Although the structure of an information strategy varies from business to business, there are some common areas included in most information strategy documents shown in table 2.

Construct	Purpose
Overview of Information Resources	Summary of resources, their utilisation by internal staff and external stakeholders, key projects, budgeting, etc.
Information Architecture and IT Structure	Description of the IT infrastructure, key projects, itemisation of data sources and their purpose.
External Factors	Analysis of the competition, the economy, government policy and technological advances.
Opportunities	Analysis of new business opportunities arising from information and technologies.
Risk Analysis	Description of internal and external threats, analysis of compliance with regulations, summary of information usage by competitors.
Schedule	List of milestones and review dates to indicate if the strategy is executed well.

Table 2. Typical Constructs of an Information Strategy Document

To provide specific guidelines to their employees, contractors, trading partners and other external stakeholder on the processing, storage and communication of various types of information, business firms usually create an *information policy* document. This document is extremely important when an organisation handles security sensitive data or is subject to government guidelines related to information processing. It defines sensitivity levels of information and lists who has access to each level. The aim of the information policy is to make sure that information assets of a company are appropriately protected from threats or disclosure.



Figure 5. Business Information, Strategy and Management.

“I studied English for 16 years but...
...I finally learned to speak it in just six lessons”
Jane, Chinese architect

ENGLISH OUT THERE

Click to hear me talking before and after my unique course download



1.5 Data Processing Software in an Enterprise

Business organisations use a wide variety of software tools to help the business run. From spreadsheets to complex enterprise resource planning systems, information processing tools help business firms derive value from their information assets. The table below attempts to list various types of software and their business purpose. Although the scope of this text does not allow consideration of all software applications in a modern business, the list below gives you a glimpse of how sophisticated data processing mechanisms could be.

	Examples	Purpose	Types of Data Managed
Spread sheets	Desktop Spreadsheets	Offer a powerful data entry and analysis tools, automatic recalculations and other analytical capabilities	Operational
	Web-based Spreadsheets	Adds online collaboration capabilities, allowing simultaneous communication and collaborative editing by multiple users	Operational
Database Systems	Database Management Systems (DBMS)	Permits to efficiently manage, secure and analyse data, as well as interface to other software applications	Operational, Management
	Data Warehouses	Aggregates data from multiple operational databases, processes and supports enterprise-wide operations	Operational, Management, Strategic
	Online Analytical Processing (OLAP)	Supports business intelligence through multidimensional data analysis	Management, Strategic
Communication and Collaboration	Intranet, Blogs, wikis, Social networking	Support information dissemination across business	Operational
	Email, Video Conferencing	Communication and Collaboration	Operational
Specialised Systems	Enterprise Resource Planning (ERP)	Provide an integrated approach to enterprise data management by integrating financial information, sales, manufacturing, human resources, etc. Offer complete information solution to enterprise overall performance.	Operational, Management, Strategic
	Customer Relationship Management (CRM)	Consolidate customer data from different sources and help streamline dealings with customers	Operational, Management, Strategic
	Knowledge Management Systems(KM)	Provide functionality of knowledge discovery and knowledge repository	Operational, Management, Strategic

Table 3. Examples of Data Processing Software in an Enterprise

Information, represented in people, knowledge, experience, and innovation, has become a driver of competition. Making the information work for a business is one of the managerial responsibilities. As you can see, managing information is not an easy task.

1.6 Summary

Information is the backbone of operations and survival for any modern business. Information is distinguished from data as a result of data processing operations. After *data* is processed and shaped in a meaningful form useful in business environment, it turns into *information*. In order to be useful to business and effectively support business processes, data is typically organised using a particular *data model*. A data model determines how data items are arranged into a hierarchy comprising of *data elements* and *data structures*. Data items are characterised by a *data type*. Standard data types include numbers, text, date and time units, with more complex data types are now available.

In order to distinguish various types of information processed and generated in a business organisation it is necessary to distinguish between *strategic*, *management* and *operational levels* in an organisation. Information required by each level differs in its origin (external or internal to organisation), time frame (long, medium or short term), level of detail, etc. How a business aligns its information assets with its business objectives is stated in the *information strategy* document. Whereas practices on information capture, use, risks and security are typically specified in an *information policy*.

Ever-increasing complexity of modern business has led to the emergence of a wide range of software designed to help business derive value from their information assets. Such software ranges from spreadsheets to integrated Enterprise Resource Planning Systems (ERP) with more and more emphasis being put onto collaboration and communications features of modern software.

1.7 Review Questions

1. What are the major differences between *data* and *information*?
2. Outline some characteristics of information typically required for strategic decision making.
3. Distinguish between the types of information used for operational and management decision making?
4. Describe the constructs of a data model? What is the purpose of specifying data types?
5. Describe how data elements such as letters in English alphabet are represented on computer hardware?
6. What kinds of software applications are used for handling operational data as well as generating strategic information?
7. What document specifies how an organisation handles its information?
8. What is the purpose of an *information strategy* document?
9. What problems arise when information becomes decentralised in a business organisation?
10. Give an example of how information systems support major business processes in sales, finance, production or human resources?

Download free eBooks at bookboon.com

1.8 Case Study: Walmart Harnesses RFID Technology to Improve Efficiency

Wal-Mart Stores, Inc. (NYSE: WMT) is a global retail giant serving 176 million customers weekly. The company operates in 14 markets from United States to Japan. WalMart uses thousands of suppliers in every merchandise category. They range from one person shops, to multi-national corporations, some sell products in just a handful of stores, others supply nationwide. The efficiency of WalMart's supply chain, yet to be duplicated, is a major factor in the company's retailing success. WalMart leverages cutting edge technology to streamline its business operations. In order to further improve its supply chain management WalMart has chosen to adopt RFID technology – tags with embedded electronic product codes (EPC) (see [1] for more detail). Essentially these smart tags are expected to replace traditional bar codes on all WalMart inventory from crate or pallet to the unit level. RFIDs provide accurate data about inventory levels and other detailed information and deliver the benefit of precise inventory management.

Excellent Economics and Business programmes at:



university of
 groningen



**“The perfect start
 of a successful,
 international career.”**

CLICK HERE
 to discover why both socially
 and academically the University
 of Groningen is one of the best
 places for a student to be

www.rug.nl/feb/education



Radio-frequency identification (RFID) relies on storing and remotely retrieving data from micro-chips or RFID tags for automated identification. The real-time information on products and inventory, reduction of human errors from manual operations and improvement of information integrity are some of the improvements RFID can deliver over the existing systems. RFID tags have been available for a number of years, but they have not been adopted widely due to cost issues as compared to bar coding and because of interoperability problems between tags and data readers. IT managers and technology vendors alike agree that RFID devices still need to overcome major manufacturing, pricing and standardization problems before widespread usage can begin [2]. WalMart's technology shift is expected to result in the deployment of nearly 1 billion RFID tags for tracking and identifying items from crate to pallet levels. RFID tags can gather and track a variety of data related to products and materials. Supporters of the technology say that RFID tags can store more detailed information than conventional bar codes, enabling retailers and manufacturers to track individual items.

Although adoption of the new technology has been a part of WalMart's strategic objectives for a number of years, the costs of the new technology has not been discussed widely from either the company itself or its suppliers. The cost of technology has decreased significantly from 50-cents-per tag in 2003 to 5-cents-per-tag. For WalMart suppliers, however, the cost of the tags alone could total \$50 million. Besides millions of RFID tags large suppliers could require thousands of readers at a price of at least \$100 per device for all their manufacturing facilities and warehouses.

To the proponents of privacy the idea of having a unique identification tag on every product they buy is alarming. Ubiquity of RFID readers could mean that every time you pass by an RFID reader, it could uniquely identify your sweater or shoes. Hypothetically, it may be possible to link credit card records with an RFID tag on your clothes and thus monitor your every move.

Despite the criticism from consumers and suppliers WalMart continues its RFID technology expansion. According to Wal-Mart Executive Vice President and CIO Rollin Ford speaking at the RFID Journal Live the current benefits of RFID tagging system "include a 30 percent reduction of out-of-stocks, reduction of excess inventory in the supply chain, and sustainability impacts" [3].

1.8.1 Recommended Sources:

- [1] <http://walmartstores.com/FactsNews/NewsRoom/7894.aspx>
- [2] <http://tompiselloroiguy.blogspot.com/2006/11/roi-of-rfid-in-supply-chain.html>
- [3] <http://walmartstores.com/FactsNews/NewsRoom/6425.aspx>
- [4] <http://www.ft.com/cms/s/0/6a4d57a6-70d5-11da-89d3-0000779e2340.html>
- [5] <http://www.computerworld.com/softwaretopics/erp/story/0,10801,82155,00.html>

1.8.2 Discussion Questions:

- a) What were the internal or possibly internal factors motivating the information technology development described in the case study?
- b) Outline the benefits that new technology and new information may provide to the organisation?
- c) Describe how the new technology might improve operations and planning for the organisation?
- d) What levels of organisational decision making will the technology improve/affect?
- e) In what way does the case study outline the need for businesses to make investment to drive value from its information assets?
- f) Outline potential risks of introducing RFID to external stakeholders to the organisation described in the case study?



American online
LIGS University
is currently enrolling in the
Interactive Online **BBA, MBA, MSc,**
DBA and PhD programs:

- ▶ enroll **by September 30th, 2014** and
- ▶ **save up to 16%** on the tuition!
- ▶ pay in 10 installments / 2 years
- ▶ Interactive **Online education**
- ▶ visit www.ligsuniversity.com to find out more!

Note: LIGS University is not accredited by any nationally recognized accrediting agency listed by the US Secretary of Education. More info [here](#).



2 Relational Data Model and SQL

2.1 Scenario – Dream Destinations

Dream Destinations Ltd is a company that provides a top quality service in bespoke, tailor-made holiday packages. They arrange everything from flights, hotel accommodation and trips to destinations within the Caribbean. At present they only record data from phone calls and e-mails on paper note pads and these are put inside filing cabinets. They have no methods for storing customer, hotel or flight information and have difficulty in keeping track of information. They only advertise by word of mouth, cold calling telesales and advertising through print media such as their own travel brochure which can be found in travel agents.

Dream Destinations Ltd have realised that should something happen to the paper files, e.g. an office fire, their data would be lost as they have no way of keeping data. They want to be able to access the required information quickly and efficiently. They also need a means of advertising themselves to increase their customer base. They have asked for us to create a means of storing their client, booking and property information.

2.2 The Relational Model

Relational Database Management Systems (RDBMS) have become the prevalent means of managing data. RDBMS comprises of software facilitating storage, entry and data retrieval. Modern RDBMS rely on the Relational Data Model to organise records within. Relational databases are organised in entities, attributes, and tuples. A tuple (or a record) is a set of attributes. An attribute contains a single piece of information, and an entity is a collection of tuples. A phone book, for example, can be thought of as a database file, it contains a list of records or tuples. Each tuple consists of three attributes: name, address and telephone number.

Relational model, which is at the heart of all RDBMS's (Relational Database Management Systems). In simple terms, data is manipulated in *tables* (sometimes called *Relations*), at a conceptual level several layers above how the data is actually stored.

The Table/Relation Concept

client table

clientno	fname	lname	telno	preftype	maxrent
CR76	John	Kay	0207-774-5632	Villa	500
CR56	Aline	Stewart	0141-848-1825	Apartment	475
CR74	Mike	Ritchie	01475-392178	Studio	525
CR62	Mary	Tregear	01224-196720	Villa	550

Each table must have a unique name (**client** in this case). Each row (record) is a series of interconnected data items, a client in this case. The **client** table shows 4 rows/4 clients.

A cell must hold one Atomic value (e.g. a value that wouldn't normally be divided into any smaller parts). Values can be Text (e.g. letters or Alphanumeric characters), Numbers (so that associated mathematical operations can be performed) or other types such as Dates, Times or Currency.

The **client** table contains a set of clients that use the Dream Destinations Ltd service. Each column must have a unique column name (to that table), which indicates the kind of data items shown in the column 'below'.

Every table is supposed to mirror a mathematical set and as such there is no significance in the row or column ordering. Theoretically there are also no duplicate rows allowed (actual databases may allow duplicates). A *table* is sometimes called a *relation* in mathematics.

Operations on a table are based on the mathematical principles of *selection*, *projection*, *join* and *product* (these terms come from an area of mathematics called Relational Algebra). In reality these operations are performed through a language such as SQL.

2.2.1 Starting Access

In Windows the Access database package can be started by finding the Access menu item (which is typically under the Microsoft Office menu) or by clicking on the Access icon if one is visible on the screen.

Activity 1:

The first exercises in this chapter use the database **SQLLabSessions.accdb**.

This is available through the online supplementary resources. After saving this file in your hard drive use the File ->Open menu item to start a new database session.

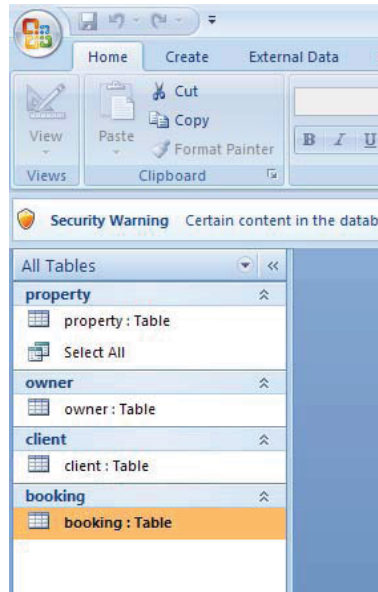
The File Format

Microsoft Access saves each database in a single file with the extension `.accdb`. Note that this is unusual – most other databases save information in several files with differing file extensions.

Note that Access file formats have changed significantly between versions. Access 97 files can be loaded and updated in Access 2000 or Access XP, however once the changes are saved it may no longer be possible to open the file in the previous version.

The Main Interface

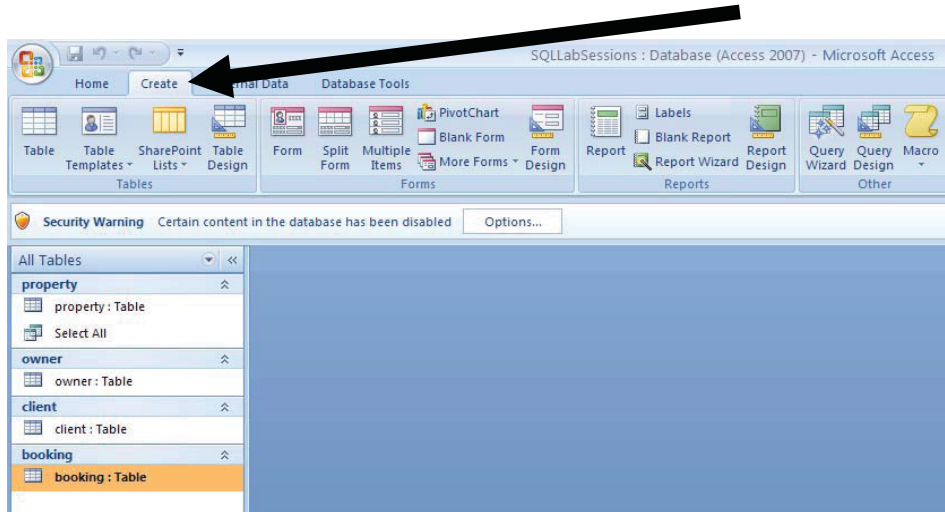
Unlike Microsoft Word or Excel, Access offers the available features and facilities for each database through a dialog box on the left hand side of the page which is open while the database is in use.



Despite the many versions of Access that have been made available in recent years (Access 97, Access 2000, Access XP), the core functionality has remained the same. Microsoft has frequently changed the GUI, so items may be placed differently on screen, for example some versions of Access 2007 places the items to create new *Tables*, *Queries*, *Forms*, *Reports* etc. under the Create tab.

An advertisement for Alcatel-Lucent. The top section is purple with the Alcatel-Lucent logo and the URL 'www.alcatel-lucent.com/careers'. The main image shows a futuristic cityscape with tall buildings and light trails. A yellow circular graphic on the left contains the text 'What if you could build your future and create the future?'. At the bottom right, a quote reads: 'One generation's transformation is the next's status quo. In the near future, people may soon think it's strange that devices ever had to be "plugged in." To obtain that status, there needs to be "The Shift".'



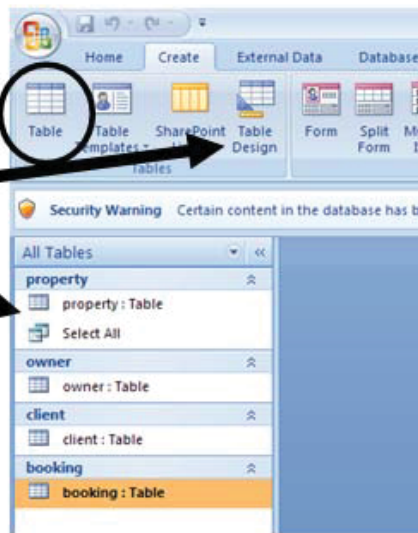


Clicking on the *Table* button allows new tables to be created

Existing Tables to have the design changed (*Design*)

Double click on an existing tables to be used (to *Open*)

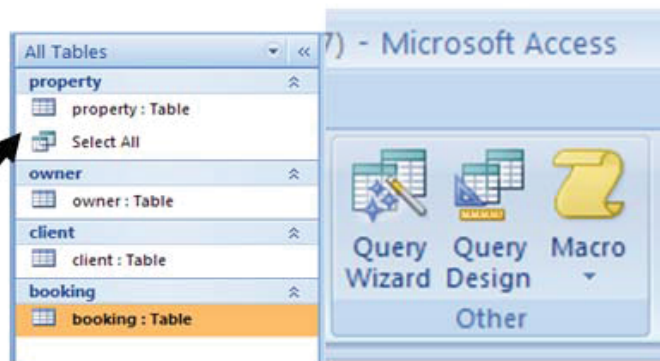
Here four existing tables can be seen, *property*, *owner*, *client* and *booking* (all have the word *Table* after them)



Clicking on the *Query Design* (under the *Create* tab) button allows creation of new queries

Double click on an existing query (in this case called *Select All*) to be used (to *Open*)

Your database does not have any queries designed yet.



Dream Destinations: Tables Used for Exercises.

The *SQLLabSessions* database contains four tables, *PROPERTY*, *OWNER*, *CLIENT* and *BOOKING*. **property** is a table containing property to be rented out information such as property number, street, country, rental cost and the yearly income.

owner is a table containing the details of the owners of the properties.

client contains the details of people who want to rent the properties.

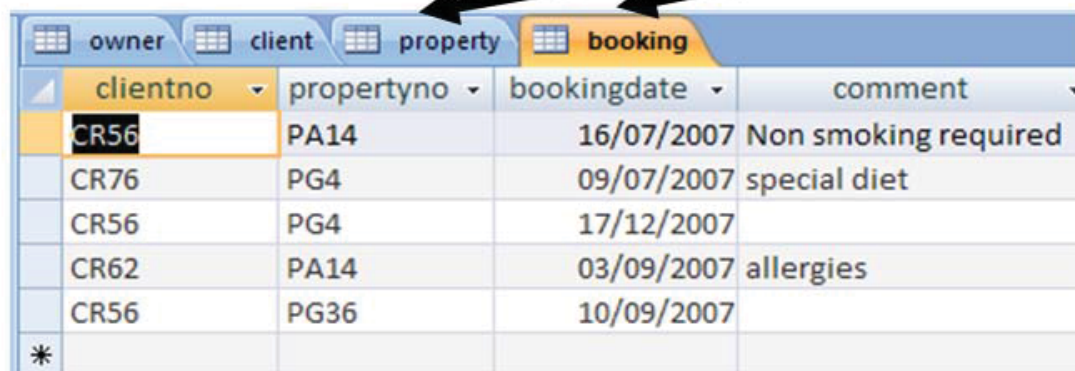
booking contains the details of clients who have booked a stay at a property.

Activity 2: To view these tables, double click on the table name. Close the tables after examining them, but leave the database open.



ownerno	fname	lname	address	telno
CO40	Tina	Murphy	63 Well St, Glasgow, G42	0141-943-1728
CO46	Joe	Keogh	2 Fergus Dr, Aberdeen, AB2 7SX	01224-861212
CO87	Carol	Farrel	6 Achray St, Glasgow, G32 9DX	0141-357-7419
CO93	Tony	Shaw	12 Park Pl, Glasgow, G4 0QR	0141-225-7025

It is worth noting that if you have more than one table open, Access creates tabs so that you can switch between tables.



clientno	propertyno	bookingdate	comment
CR56	PA14	16/07/2007	Non smoking required
CR76	PG4	09/07/2007	special diet
CR56	PG4	17/12/2007	
CR62	PA14	03/09/2007	allergies
CR56	PG36	10/09/2007	

Data Manipulation

SQL is the standard database language, supported to some extent by every database product on the market today. Until the mid 1980s, almost all mainframe databases were either hierarchical or network databases, which lacked a rigorous mathematical foundation and were often implemented in a messy or inefficient style. In 1970, E.F. Codd published a paper which provided a relational model for databases based on set theory. It took ten years for IBM to produce System R based on this relational model, which included a query language called sequel. During the period 1980 to 1983 IBM announced versions for various Operating Systems and machines. Such was the power of IBM at the time that many other companies announced a version of SQL for their machines, either as a replacement or as an alternative for their proprietary language.

- To prevent there from being multitudes of versions with differing dialects, ANSI and the ISO standards committee have produced documents detailing various standards and extensions, SQL1, SQL2 (SQL92) and SQL3. SQL1 was produced in its initial form in 1987. The second version was published in 1992 and is still having subsidiary sections added.

The current standard is SQL3, which can still be regarded as a draft. There are few databases that actually support this standard – most of them offer SQL92 compatibility.

Dream Destinations: Database Tables

`property` table

propertyno	street	country	type	rooms	rent	yearincome	ownerno
PA14	16 Holhead	Barbados	Villa		6 500	12000	CO46
PG16	5 Novar Dr	Antigua	Apartment		2 400	8000	CO87
PG21	18 Dale Rd	St Kitts	Apartment		3 450	9500	CO40
PG36	2 Manor Rd	Barbados	Studio		1 475	11075	CO93
PG4	6 Lawrence St	Barbados	Villa		4 525	14050	CO87
PL94	6 Argyll St	Barbados	Villa		4 550	15000	CO93
*							



Maastricht University *Leading in Learning!*

Join the best at the Maastricht University School of Business and Economics!

Top master's programmes

- 33rd place Financial Times worldwide ranking: MSc International Business
- 1st place: MSc International Business
- 1st place: MSc Financial Economics
- 2nd place: MSc Management of Learning
- 2nd place: MSc Economics
- 2nd place: MSc Econometrics and Operations Research
- 2nd place: MSc Global Supply Chain Management and Change

Sources: Keuzegids Master ranking 2013; Elsevier 'Beste Studies' ranking 2012; Financial Times Global Masters in Management ranking 2012

Maastricht University is the best specialist university in the Netherlands
(Elsevier)

Visit us and find out why we are the best!
Master's Open Day: 22 February 2014

www.mastersopenday.nl



owner table

ownerno	fname	lname	address	telno
CO46	Joe	Keogh	2 Fergus Dr, Aberdeen, AB2 7SX	01224-861212
CO87	Carol	Farrel	6 Achray St, Glasgow, G32 9DX	0141-357-7419
CO40	Tina	Murphy	63 Well St, Glasgow, G42	0141-943-1728
CO93	Tony	Shaw	12 Park Pl, Glasgow, G4 0QR	0141-225-7025

client table

clientno	fname	lname	telno	preftype	maxrent
CR76	John	Kay	0207-774-5632	Villa	500
CR56	Aline	Stewart	0141-848-1825	Apartment	475
CR74	Mike	Ritchie	01475-392178	Studio	525
CR62	Mary	Tregear	01224-196720	Villa	550

booking table

clientno	propertyno	bookingdate	comment
CR56	PA14	16/07/2007	Non smoking required
CR76	PG4	09/07/2007	special diet
CR56	PG4	17/12/2007	
CR62	PA14	03/09/2007	allergies
CR56	PG36	10/09/2007	

2.2.2 Starting and Editing SQL

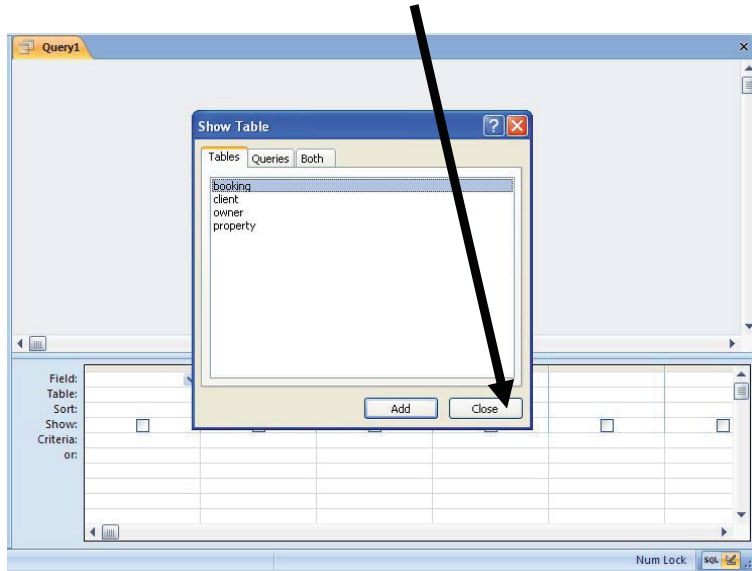
What is a Query?

A Query can be classified as a question that we require the database to provide an answer to. Example queries could be questions such as 'Which property has an income of more than £11,000 per year?' or 'What will the rental figures look like if we increase them by 5%?'

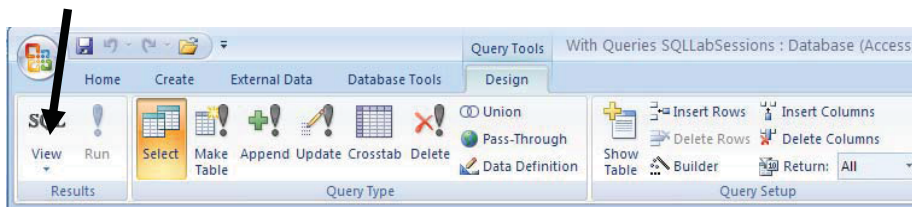
After creating the query, we execute/run it (or in Access terminology we **Open** it) and the database produces a response (e.g. brings us the information we asked for). Queries can be edited and then re-executed if they are not quite correct.

The Access Query Mechanism

Clicking on the **CREATE** tab and the *Query Design* button (only click this once) opens the Query design view. Click on the **Close** button.



You will notice that your top toolbar will be on the **Query Tools, Design** tab. Click on the **SQL View** button once.



A blank database (and the database supplied with text) will have no queries saved so the dialog box will contain two entries offering ways to create a new query.

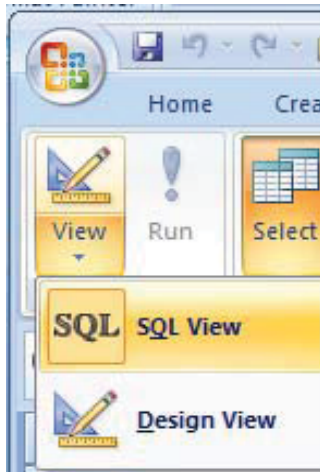


Activity 3: Follow the above steps to get to the **SQL View** of a query.

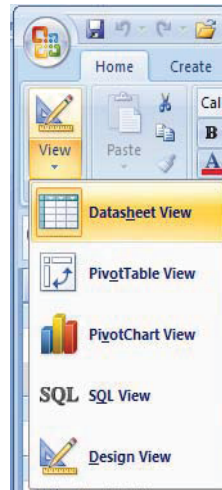
The Three Main Views

As you have not created an SQL query, you will only have access to two views (**SQL** and **Design**, see below), once you have created a query, you will have access to more views.

Views Before Creating a Query

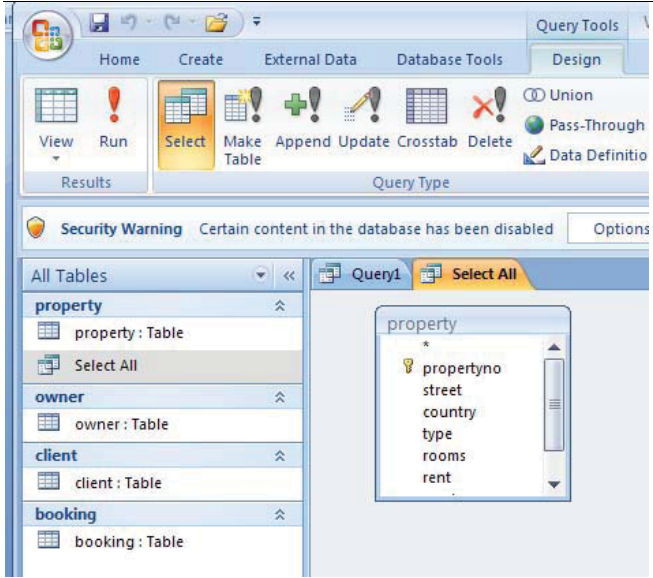
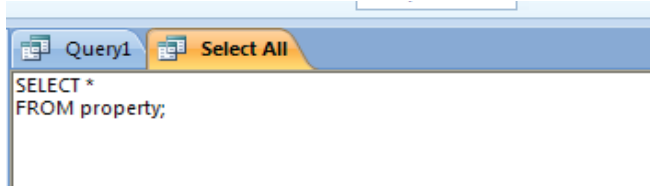



Views After Creating a Query



An advertisement for the AXA Global Graduate Program 2015. It features a portrait of a young woman with red hair on the left. On the right, the text reads: '> Apply now', 'REDEFINE YOUR FUTURE', 'AXA GLOBAL GRADUATE PROGRAM 2015'. At the bottom right is the AXA logo and the slogan 'redefining / standards'. A small vertical text on the left edge of the image reads 'agence edg. © Photonistop'.



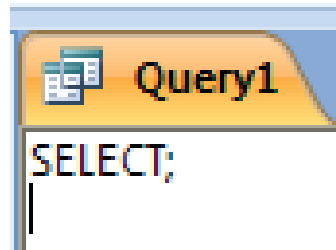
<p>The Design View</p> <p>The design view allows query creation using a drag and drop principle. Although easier to use and learn, this interface is not transferable to other databases and will not allow all queries to be written.</p>																																																																	
<p>The SQL View</p> <p>The SQL view allows the SQL source to be viewed in a primitive text editor. This is the principle way of entering and editing SQL text used on this course</p>																																																																	
<p>The Datasheet View</p> <p>The datasheet view actually 'runs' the query and generates the result. This is the same as selecting 'Open' on a query through the Query manager interface.</p>	 <table border="1" data-bbox="719 1055 1374 1238"> <thead> <tr> <th>propertyno</th> <th>street</th> <th>country</th> <th>type</th> <th>rooms</th> <th>rent</th> <th>yearincome</th> <th>ownerr</th> </tr> </thead> <tbody> <tr> <td>PA14</td> <td>16 Holthead</td> <td>Barbados</td> <td>Villa</td> <td>6</td> <td>500</td> <td>12000</td> <td>CO46</td> </tr> <tr> <td>PG16</td> <td>5 Novar Dr</td> <td>Antigua</td> <td>Apartment</td> <td>2</td> <td>400</td> <td>8000</td> <td>CO87</td> </tr> <tr> <td>PG21</td> <td>18 Dale Rd</td> <td>St Kitts</td> <td>Apartment</td> <td>3</td> <td>450</td> <td>9500</td> <td>CO40</td> </tr> <tr> <td>PG36</td> <td>2 Manor Rd</td> <td>Barbados</td> <td>Studio</td> <td>1</td> <td>475</td> <td>11075</td> <td>CO93</td> </tr> <tr> <td>PG4</td> <td>6 Lawrence St</td> <td>Barbados</td> <td>Villa</td> <td>4</td> <td>525</td> <td>14050</td> <td>CO87</td> </tr> <tr> <td>PLD4</td> <td>6 Argyll St</td> <td>Barbados</td> <td>Villa</td> <td>4</td> <td>550</td> <td>15000</td> <td>CO93</td> </tr> <tr> <td>*</td> <td></td> <td></td> <td></td> <td></td> <td></td> <td></td> <td></td> </tr> </tbody> </table>	propertyno	street	country	type	rooms	rent	yearincome	ownerr	PA14	16 Holthead	Barbados	Villa	6	500	12000	CO46	PG16	5 Novar Dr	Antigua	Apartment	2	400	8000	CO87	PG21	18 Dale Rd	St Kitts	Apartment	3	450	9500	CO40	PG36	2 Manor Rd	Barbados	Studio	1	475	11075	CO93	PG4	6 Lawrence St	Barbados	Villa	4	525	14050	CO87	PLD4	6 Argyll St	Barbados	Villa	4	550	15000	CO93	*							
propertyno	street	country	type	rooms	rent	yearincome	ownerr																																																										
PA14	16 Holthead	Barbados	Villa	6	500	12000	CO46																																																										
PG16	5 Novar Dr	Antigua	Apartment	2	400	8000	CO87																																																										
PG21	18 Dale Rd	St Kitts	Apartment	3	450	9500	CO40																																																										
PG36	2 Manor Rd	Barbados	Studio	1	475	11075	CO93																																																										
PG4	6 Lawrence St	Barbados	Villa	4	525	14050	CO87																																																										
PLD4	6 Argyll St	Barbados	Villa	4	550	15000	CO93																																																										
*																																																																	

Writing a query consists of the following phases:

- Write the query in *SQL view*
- View the query in *Datasheet view*
- Return to *SQL view* if changes are required

Activity 4: Creating a simple query

YOU HAVE ALREADY OPENED THE SQL query interface to create a new query. You will see:

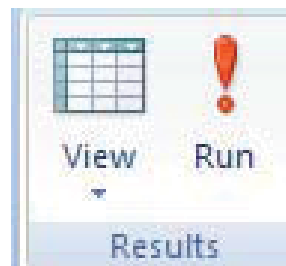


Now replace the content above (`SELECT *`) with the following:

```
SELECT * FROM property;
```

This syntax requires to select every record from the *property* table. Note: You must make sure that the ; is at the end and there is only ONE of them per query.

Click on either the **Datasheet View** from the *View* menu item or the **Run** button (they both do the same) to run the query.



Switch back and forth from **SQL** to **Datasheet View** to see how Access switches modes.

2.2.3 Data Manipulation using SQL

SQL statements use the following reserved words:

Select	Used to retrieve data from the database, the most commonly used statement
Insert Delete Update	Used to enter (<i>insert</i>), remove (<i>delete</i>) or change (<i>update</i>) rows from a table. Together with <i>Select</i> , collectively known as the DML or Data Manipulation Language
Create Alter Drop	Used to set up (<i>create</i>), change (<i>alter</i>) or remove (<i>drop</i>) data structures such as tables, views or indexes. Collectively known as the DDL or Data Definition Language
Grant Revoke Validate	Used to give (<i>grant</i>) or remove (<i>revoke</i>) access rights to data and data structures within an SQL database

Not all of these are valid in Access, but are part of the SQL standard. A reserved word is one that is specified as part of the core language and cannot be redefined by the user. Hence attempting to name a column 'select' will result in an error.

2.3 The SELECT statement

The Select statement is used to pull out and display information from a table. Its basic structure has this form:

```
SELECT select-list
FROM table;
```

select-list is a series of column names each separated by comma.

```
SELECT propertyno FROM property;
SELECT country FROM property;
SELECT propertyno, country FROM property;
```



Empowering People. Improving Business.

BI Norwegian Business School is one of Europe's largest business schools welcoming more than 20,000 students. Our programmes provide a stimulating and multi-cultural learning environment with an international outlook ultimately providing students with professional skills to meet the increasing needs of businesses.

BI offers four different two-year, full-time Master of Science (MSc) programmes that are taught entirely in English and have been designed to provide professional skills to meet the increasing need of businesses. The MSc programmes provide a stimulating and multi-cultural learning environment to give you the best platform to launch into your career.

- MSc in Business
- MSc in Financial Economics
- MSc in Strategic Marketing Management
- MSc in Leadership and Organisational Psychology

BI NORWEGIAN BUSINESS SCHOOL

EFMD **EQUIS** ACCREDITED

www.bi.edu/master



The items after the **SELECT** keyword can be one or more of the following, separated by commas:

	Example	Explanation
One or more column name(s)	country	Show the country column
*	*	Show all columns
Arithmetic expression	rent+1000	Show rent + 1000
Text expression	fname&lname	Combine the two columns called fname and lname together
Application Function	round(rent, 2)	Round rent to a certain number of places

Activity 5: The following examples demonstrate variations on the **SELECT** statement. Type these queries in and verify that they produce the results indicated. Make sure that you save each of the queries as it will help you with your coursework.

Remember – you must use the column heading names, if you are not sure which table the column header comes from, look back at the print out of the tables in this handout.

Examples – Try these out to see the result

Display all columns and rows from table property.

```
SELECT * FROM property;
```

propertyno	street	country	type	rooms	rent	yearincome	ownerno
PA14	16 Holhead	Barbados	Villa	6	500	12000	CO46
PG16	5 Novar Dr	Antigua	Apartment	2	400	8000	CO87
PG21	18 Dale Rd	St Kitts	Apartment	3	450	9500	CO40
PG36	2 Manor Rd	Barbados	Studio	1	475	11075	CO93
PG4	6 Lawrence St	Barbados	Villa	4	525	14050	CO87
PL94	6 Argyll St	Barbados	Villa	4	550	15000	CO93
*							

Display propertyno, street and their countries.

```
SELECT propertyno, street, country FROM property;
```

propertyno	street	country
PA14	16 Holhead	Barbados
PG16	5 Novar Dr	Antigua
PG21	18 Dale Rd	St Kitts
PG36	2 Manor Rd	Barbados
PG4	6 Lawrence St	Barbados
PL94	6 Argyll St	Barbados
*		

Display all properties, along with the amount that a 50% rise would make to the rent. Note that this doesn't change the value in the property table.

```
SELECT propertyno, (rent/100*50)+rent FROM property;
```

propertyno	Expr1001
PA14	750
PG16	600
PG21	675
PG36	712.5
PG4	787.5
PL94	825

Note that Access generates a column name (as the mathematical expression $(rent/100*50)+rent$ can't be used). To force a more sensible name to be used, use 'AS columnname'.

Activity 6: Try `SELECT propertyno, (rent/100*50)+rent AS newrent FROM property;`

propertyno	newrent
PA14	750
PG16	600
PG21	675
PG36	712.5
PG4	787.5
PL94	825

Display all the unique property numbers.

```
SELECT DISTINCT propertyno FROM booking;
```

propertyno
PA14
PG36
PG4

Concatenate and display the property number and type of property in one column.

```
SELECT propertyno&"-"&type AS proptype FROM property;
```

proptype
PA14-Villa
PG16-Apartme
PG21-Apartme
PG36-Studio
PG4-Villa
PL94-Villa
*

Concatenate means combine two pieces of text together into one. This operation is used with text. Microsoft uses & to concatenate (as seen in Excel).

2.4 Exercises

In the following exercises, the query must be specified to produce the suggested result. There are spaces for you to write the SQL query in. **Note:** that you may have to use the AS command to get correct column headings in SQL.

Need help with your dissertation?

Get in-depth feedback & advice from experts in your topic area. Find out what you can do to improve the quality of your dissertation!

Get Help Now



Go to www.helpmyassignment.co.uk for more info

 **Helpmyassignment**

1. Display all the information in the table called `client`

SQL:

clientno	fname	lname	telno	preftype	maxrent
CR56	Aline	Stewart	0141-848-1825	Apartment	475
CR62	Mary	Tregear	01224-196720	Villa	550
CR74	Mike	Ritchie	01475-392178	Studio	525
CR76	John	Kay	0207-774-5632	Villa	500

2. Display the `propertyno` and `country` for each property

SQL:

propertyno	country
PA14	Barbados
PG16	Antigua
PG21	St Kitts
PG36	Barbados
PG4	Barbados
PL94	Barbados

3. Display all the distinct types of property

SQL:

type
Apartment
Studio
Villa

4. Display a list of the monthly income of each rental property (calculated from yearly income/12)

SQL:

propertyno	ownerno	Expr1002
PA14	CO46	1000
PG16	CO87	666.666666666667
PG21	CO40	791.666666666667
PG36	CO93	922.916666666667
PG4	CO87	1170.833333333333
PL94	CO93	1250

5. Display a list of the distinct property locations

SQL:

country
Antigua
Barbados
St Kitts

6. Display the property number, and the new rent figure given a 12% rise in the rent figure. Name the new column `increase`

SQL:

propertyno	increase
PA14	560
PG16	448
PG21	504
PG36	532
PG4	588
PL94	616
*	

7. Display the first name and last name of each client as a single column separated by a hyphen (name the column `clientname`), along with new rent figure given a 5% increase in the maximum rent figure (name the new column `newmax`)

SQL:

clientname	newmax
Aline-Stewart	498.75
Mary-Tregear	577.5
Mike-Ritchie	551.25
John-Kay	525
*	

2.5 Summary

Relational Database Management Systems (RDBMS) have become the prevalent means of managing data. RDBMS comprises of software facilitating storage, entry and data retrieval. Relational databases are organised in entities, attributes, and tuples. A tuple (or a record) is a set of attributes. An attribute contains a single piece of information, and an entity is a collection of tuples. Relations in a database are represented using entities (or tables), with rows containing unique tuples. A cell must hold one atomic value (e.g. a value that wouldn't normally be divided into any smaller parts). Values can be Text (e.g. letters or Alphanumeric characters), Numbers (so that associated mathematical operations can be performed) or other types such as Dates, Times or Currency.

Standard Query Language (SQL) is the most widely-accepted database language, supported to some extent by every database product on the market today. Data retrieval in a database is performed using queries written in a query language. A Query can be classified as a question that we require the database to provide an answer to. The `Select` statement is used in SQL to pull out and display information from a table. Its basic structure has this form:

```
SELECT select-list
FROM table;
```

In addition to data retrieval, SQL supports other operations for managing data. These include:

Select	Used to retrieve data from the database, the most commonly used statement
Insert Delete Update	Used to enter (<code>insert</code>), remove (<code>delete</code>) or change (<code>update</code>) rows from a table. Together with <code>Select</code> , collectively known as the DML or Data Manipulation Language
Create Alter Drop	Used to set up (<code>create</code>), change (<code>alter</code>) or remove (<code>drop</code>) data structures such as tables, views or indexes. Collectively known as the DDL or Data Definition Language
Grant Revoke Validate	Used to give (<code>grant</code>) or remove (<code>revoke</code>) access rights to data and data structures within an SQL database

3 Data Definition in SQL

3.1 Data Definition Language (DDL)

The SQL language has facilities to create, manipulate and delete (drop) tables. Often these command line activities are duplicated through a GUI (such as the one in Access), however there are advantages to performing these operations through text. As an example consider a temporary table created, filled with records and then dropped with no user intervention.

3.1.1 Creating a Table

The SQL create table syntax is of the form

```
CREATE TABLE tablename
    (column_name      type [NULL/NOT NULL],
     column_name      type [NULL/NOT NULL],
     column_name      type [NULL/NOT NULL]
     ..)
```



Brain power

By 2020, wind could provide one-tenth of our planet's electricity needs. Already today, SKF's innovative know-how is crucial to running a large proportion of the world's wind turbines.

Up to 25 % of the generating costs relate to maintenance. These can be reduced dramatically thanks to our systems for on-line condition monitoring and automatic lubrication. We help make it more economical to create cleaner, cheaper energy out of thin air.

By sharing our experience, expertise, and creativity, industries can boost performance beyond expectations. Therefore we need the best employees who can meet this challenge!

The Power of Knowledge Engineering

Plug into The Power of Knowledge Engineering.
Visit us at www.skf.com/knowledge

SKF



According to the relational model rules, each `tablename` must be unique for the database and each `column_name` must be unique for each relation/table.

`Column_name` may be up to 30 characters in length starting with an initial alphabetic character. The name may consist of alphanumeric characters and the special characters `_`, `$`, `#` or `@`.

The SQL standard suggests the following types:

CHAR (size)	Text data, maximum of 'size' characters up to 240
DATE	Dates (which include time)
LONG	Character data up to 65535 (some restrictions may apply on the use of this field in a select statement)
NUMBER	Maximum of 40 digits (will accept scientific notation)

There are other types which can be found in the SQL standard or the user guide for the particular database you are using.

`NULL` and `NOT NULL` indicate whether the field will allow `NULL` values (which is the default) or whether all cells must have a value.

Note that the way that desktop databases have implemented these types varies from version to version – Access 97/2000 offers Text, Memo, Number, Date/Time, Currency, AutoNumber, Yes/No, OLE Object and Hyperlink.

Examples

```
CREATE table branch
(
branchno number not null,
street char(15),
city char(15)
);
```

Creates a table called `branch` with the three fields `branchno`, `street` and `city`. Attempting to insert a record with null for `branchno` will generate an error as you have defined it as not null (meaning not empty) above.


```
CREATE table staff
(
  staffno number,
  fname char(15),
  lname char(15),
  job char(15),
  sal number,
  branchno number null
);
```

Creates a table called `staff` with six fields: staff number (`staffno`), employee first and last name (`fname`, `lname`), job title (`job`), salary (`sal`) and branch number (`branchno`). NULL values will be allowed in the `branchno` field.

3.1.2 Deleting a Table

To permanently delete a table (to 'drop' a table), use the drop command:

```
DROP table tablename;
```

Note that most databases regard this as an irreversible process – no undo features are typically supplied.



"I studied English for 16 years but...
...I finally learned to speak it in just six lessons"
Jane, Chinese architect

ENGLISH OUT THERE

Click to hear me talking before and after my unique course download



Example

Deleting the branch table:

```
DROP table branch;
```

3.1.3 Modifying a table structure

To change a table structure use the `alter table` command:

```
ALTER table tablename  
    (  
        [MODIFY columnname type |  
        ADD columnname type ]  
    );
```

Examples

To add a `spouses_name` field to the `staff` table:

```
ALTER table staff add spouses_name char(15);
```

To increase the size of the `lname` column:

```
ALTER table staff alter column lname char(20);
```

Note that different databases will react in different ways if attempts are made to:

- Delete columns where there is data present
- Decrease the size of a column where data is present
- Change `NULL` columns to `NOT NULL`
- Convert a column to a different type

Some implementations will take unpredictable 'best guess' solutions.

3.2 Data Manipulation Language (DML)

Most SQL queries allow views on the original data, without manipulating the original data set. Actual changes to rows (records or tuples) in a table are done through the `Insert`, `Update` or `Delete` statements.

3.2.1 Inserting records into a table

The `INSERT` statement adds records (rows) to a table and has two forms:

```
INSERT into table [(columnname, columnname, ...)]
values (value, value,...)
```

This will insert a record using a supplied column list the supplied values. If no column list is supplied the record will be inserted as is, which may generate errors if the columns don't match up.

```
INSERT into table [(columnname, columnname, ...)]
select select-list
from table(s) ... etc.
```

This form allows an insert to be based on the results of a `select` query.

Example

Inserting a new record into the `dept` table:

```
INSERT into branch (branchno, street, city)
VALUES (50, "22 Deer Road", "London");
```

If a field is left off the list but is defined as `NOT NULL` an error message will be generated. Note that autoincrementing key fields can be left off the insert list and the appropriate values will be calculated and pasted in.

3.3 Exercises – DDL and DML activities

Write SQL commands to perform the following activities:

-
1. Create a specialised property table called *propertyBarbados*, which has the same field names as the property table.
-

SQL:

-
2. Write an appropriate SQL query to insert a new property into *propertyBarbados* with the following details:
-

```
propertyno - BD67
street - Sunrise St
country - Barbados
type - Villa
rooms - 7
rent - 600
year income - 14000
ownerno - CO96
```

SQL:

3. Write a query that will insert the details of other properties in Barbados into the table

SQL:

propertyno	street	country	type	rooms	rent	yearincome	ownerno
BD67	Sunrise St	Barbados	Villa	7	600	14000	CO96
PA14	16 Holhead	Barbados	Villa	6	500	12000	CO46
PL94	6 Argyll St	Barbados	Villa	4	550	15000	CO93
PG4	6 Lawrence St	Barbados	Villa	4	525	14050	CO87
PG36	2 Manor Rd	Barbados	Studio	1	475	11075	CO93

4. Write an SQL statement to drop the *propertyBarbados* table

SQL:

What do you want to do?

No matter what you want out of your future career, an employer with a broad range of operations in a load of countries will always be the ticket. Working within the Volvo Group means more than 100,000 friends and colleagues in more than 185 countries all over the world. We offer graduates great career opportunities – check out the Career section at our web site www.volvogroup.com. We look forward to getting to know you!

VOLVO
 AB Volvo (publ)
www.volvogroup.com

VOLVO TRUCKS | RENAULT TRUCKS | MACK TRUCKS | VOLVO BUSES | VOLVO CONSTRUCTION EQUIPMENT | VOLVO PENTA | VOLVO AERO | VOLVO IT
 VOLVO FINANCIAL SERVICES | VOLVO 3P | VOLVO POWERTRAIN | VOLVO PARTS | VOLVO TECHNOLOGY | VOLVO LOGISTICS | BUSINESS AREA ASIA



3.4 Summary

The SQL language has facilities to create, manipulate and delete (drop) tables. Often these command line activities are duplicated through a GUI (such as the one in Access), however there are advantages to performing these operations through text. The SQL create table syntax is of the form:

```
CREATE TABLE tablename
    (column_name  type [NULL/NOT NULL],
     column_name  type [NULL/NOT NULL],
     column_name  type [NULL/NOT NULL] ..)
```

To permanently delete a table (to 'drop' a table), use the `drop` command:

```
DROP table tablename;
```

To change a table structure use the `alter table` command:

```
ALTER table tablename
    (
        [MODIFY columnname type |
         ADD columnname type ]
    );
```

Most SQL queries allow views on the original data, without manipulating the original data set. Actual changes to rows in a table (or Data Manipulation) are done through the `Insert`, `Update` or `Delete` statements. The `INSERT` statement adds records (rows) to a table and has two forms:

```
INSERT into table [(columnname, columnname, ...)]
values (value, value,...)
```

This will insert a record using a supplied column list the supplied values. If no column list is supplied the record will be inserted as is, which may generate errors if the columns don't match up.

```
INSERT into table [(columnname, columnname, ...)]
select select-list from table(s) ... etc.
```

This form allows an insert to be based on the results of a `select` query.

4 Advanced Selection Queries

4.1 Ordering results

ORDER BY

In a table, the order of the records (rows) cannot be guaranteed – in fact as records are added (to the bottom of the table) and deleted (from the centre of the table) the order becomes even less predictable.

To view a set of ordered records SQL provides the `ORDER BY` keywords – to see all the records in the `PROPERTY` table ordered by `propertyno` use:

```
SELECT *  
FROM property  
ORDER BY propertyno;
```

A sort section in a `SELECT` statement is of the form:

```
ORDER BY object [DESC [object [DESC]...
```

Where `object` can be any valid select list object except `*`.

Numeric values will be shown lowest value first, date values will be shown earliest and character values will be sorted alphabetically. If the `DESC` keyword is used, sort order will be reversed e.g. highest value first. Note that empty `NULL` values will always be shown first. The opposite is `ASC` for ascending. The `ORDER BY` clause is the last statement of the `SELECT` command.

ORDER BY examples

Activity: In the SQL view of Microsoft Access type in these example queries and verify that they produce similar results.

Examples

```
Display property no, owner no and year income, ordered by year income
```

```
SELECT propertyno,ownerno, yearincome  
FROM property  
ORDER BY yearincome;
```


propertyno	ownerno	yearincome
PG21	CO40	9500
PG16	CO87	8000
PL94	CO93	15000
PG4	CO87	14050
PA14	CO46	12000
PG36	CO93	11075

Note that the order by clause can refer to a column not required in the output selection – hence display propertyno and ownerno, ordered by yearincome:

```
SELECT propertyno,ownerno
FROM property
ORDER BY yearincome;
```

propertyno	ownerno
PG21	CO40
PG16	CO87
PL94	CO93
PG4	CO87
PA14	CO46
PG36	CO93

gaiTEYE
Challenge the way we run

EXPERIENCE THE POWER OF FULL ENGAGEMENT...

**RUN FASTER.
RUN LONGER..
RUN EASIER...**

**READ MORE & PRE-ORDER TODAY
WWW.GAITEYE.COM**



Display **all** the property information ordered by property number and rent, with rent in descending order.

```
SELECT *
FROM property
ORDER by propertyno, rent DESC;
```

propertyno	street	country	type	rooms	rent	yearincome	ownerno
PA14	16 Holhead	Barbados	Villa	6	500	12000	CO46
PG16	5 Novar Dr	Antigua	Apartment	2	400	8000	CO87
PG21	18 Dale Rd	St Kitts	Apartment	3	450	9500	CO40
PG36	2 Manor Rd	Barbados	Studio	1	475	11075	CO93
PG4	6 Lawrence St	Barbados	Villa	4	525	14050	CO87
PL94	6 Argyll St	Barbados	Villa	4	550	15000	CO93

Note the use of the comma inside the ORDER BY clause.

Display property no, country, rooms and monthly rental income – order by propertyno and country (the monthlyrent column is created by you)

```
SELECT propertyno, country, rooms, yearincome/12 AS monthlyrent
FROM property
ORDER BY propertyno, country;
```

propertyno	country	rooms	monthlyrent
PA14	Barbados	6	1000
PG16	Antigua	2	666.6666666666667
PG21	St Kitts	3	791.6666666666667
PG36	Barbados	1	922.9166666666667
PG4	Barbados	4	1170.8333333333333
PL94	Barbados	4	1250

4.2 Selecting Specific Rows

The Selection Operation

Projection can be visualised as providing specific columns in a table, Selection can be used to get specific rows.

A **Selection** operation uses a condition to specify the rows that will be displayed in the resulting table.

Example: Show every row in PROPERTY where Rent is greater than 400.

object operator object

Where the object can be any valid SELECT object except * or an aggregate function (discussed later). Operator can be a Boolean operator or a special SQL operator:

Boolean Operators

=	Equal to
!= or <>	Not equal to
<	Less than
>	Greater than
<=	Less than or equal to
>=	Greater than or equal to

Special operators

BETWEEN lowest AND highest (values inclusive)

IN (value, value, ...)

LIKE "FUZZY STRING"

IS NULL

NOT can negate any of the above

SELECTION examples using the WHERE clause

Activity: Type in these example queries and verify that they produce similar results

Examples

Display the property information for Villas

```
SELECT *
FROM property
WHERE type="Villa";
```

propertyno	street	country	type	rooms	rent	yearincome	ownerno
PA14	16 Holhead	Barbados	Villa	6	500	12000	CO46
PL94	6 Argyll St	Barbados	Villa	4	550	15000	CO93
PG4	6 Lawrence St	Barbados	Villa	4	525	14050	CO87
*							

Note that the text part of the condition must be enclosed in double quotes.

Display the properties that owner number CO87 has

```
SELECT *
FROM property
WHERE ownerno="CO87";
```

propertyno	street	country	type	rooms	rent	yearincome	ownerno
PG4	6 Lawrence St	Barbados	Villa		4 525	14050	CO87
PG16	5 Novar Dr	Antigua	Apartment		2 400	8000	CO87
*							

Display the properties that are Villas with a rental figure over £500

```
SELECT *
FROM property
WHERE type="Villa" and rent>500;
```

Note how number values do not have quotes (as long as the field is defined as Number).

propertyno	street	country	type	rooms	rent	yearincome	ownerno
PL94	6 Argyll St	Barbados	Villa		4 550	15000	CO93
PG4	6 Lawrence St	Barbados	Villa		4 525	14050	CO87



Display the details of all bookings on property PG4 where a comment has not been supplied

```
SELECT *
FROM booking
WHERE propertyno="PG4" AND comment IS NULL;
```

clientno	propertyno	bookingdate	comment
CR56	PG4	17/12/2007	

Note – null means empty, not null would mean bring up all the people who have values that are not blank

Display the properties that have the owner number CO46 or CO87

```
SELECT *
FROM property
WHERE ownerno in ("CO46", "CO87");
```

propertyno	street	country	type	rooms	rent	yearincome	ownerno
PA14	16 Holhead	Barbados	Villa	6	500	12000	CO46
PG4	6 Lawrence St	Barbados	Villa	4	525	14050	CO87
PG16	5 Novar Dr	Antigua	Apartment	2	400	8000	CO87

This could be done with the condition `ownerno="CO46" or ownerno="CO87"`.

You could use the `order by` clause to put in the above `ownerno` descending order:

```
SELECT *
FROM property
WHERE ownerno in ("CO46", "CO87")
ORDER by ownerno DESC;
```

4.3 Exercises – Order As and Selection

In the following exercises, a query must be specified to produce the suggested result. There are spaces for you to write SQL query statements. Use the `AS` command to get correct column headings in SQL.

-
1. Display the property number, street and country information ordered by country.
-

SQL:

propertyno	street	country
PG16	5 Novar Dr	Antigua
PG36	2 Manor Rd	Barbados
PG4	6 Lawrence St	Barbados
PL94	6 Argyll St	Barbados
PA14	16 Holhead	Barbados
PG21	18 Dale Rd	St Kitts
*		

-
2. Display the property number, street and country information ordered by country (descending) and property number (ascending).
-

SQL:

propertyno	street	country
PG21	18 Dale Rd	St Kitts
PA14	16 Holhead	Barbados
PG36	2 Manor Rd	Barbados
PG4	6 Lawrence St	Barbados
PL94	6 Argyll St	Barbados
PG16	5 Novar Dr	Antigua

-
3. Display the property information for properties that have less than 4 rooms.
-

SQL:

propertyno	street	country	type	rooms	rent	yearincome	ownerno
PG36	2 Manor Rd	Barbados	Studio	1	475	11075	CO93
PG21	18 Dale Rd	St Kitts	Apartment	3	450	9500	CO40
PG16	5 Novar Dr	Antigua	Apartment	2	400	8000	CO87
*							

4. Display all the properties with 4 rooms and rent of over £540.

SQL:

propertyno	street	country	type	rooms	rent	yearincome	ownerno
PL94	6 Argyll St	Barbados	Villa	4	550	15000	CO93

5. Display a list of client last names, preference type and the maximum rent figure with a preference of Villas ordered by their maximum rent figure ascending.

SQL:

Iname	preftype	maxrent
Kay	Villa	500
Tregear	Villa	550

www.sylvania.com

We do not reinvent the wheel we reinvent light.

Fascinating lighting offers an infinite spectrum of possibilities: Innovative technologies and new markets provide both opportunities and challenges. An environment in which your expertise is in high demand. Enjoy the supportive working atmosphere within our global group and benefit from international career paths. Implement sustainable ideas in close cooperation with other specialists and contribute to influencing our future. Come and join us in reinventing light every day.

Light is OSRAM

OSRAM SYLVANIA



6. Show a list of clients who have made a comment ordered by property number descending.

SQL:

clientno	propertyno	bookingdate	comment
CR76	PG4	09/07/2007	special diet
CR62	PA14	03/09/2007	allergies
CR56	PA14	16/07/2007	Non smoking required

7. Display the property numbers, type, rent and owner number of those properties who have a yearly income figure more than £11,000 and have 4 rooms, ordered by property number and type ascending.

SQL:

propertyno	type	rent
PG4	Villa	525
PL94	Villa	550

4.4 Summary

The purpose of the SELECT statement in SQL is to retrieve data from one or more tables and display the result in a required format. It is possible to select specific records from a database according to a particular condition. Also, one may use ORDER BY to sort records after they have been selected. The general form for the complete SELECT statement is given below:

```
SELECT [DISTINCT | ALL] {*| column [AS new_name]} [, ...]
FROM TableName [alias] [,...]
[WHERE conditional statement]
[GROUP BY column_list] [HAVING condition]
[ORDER BY column_list]
```

ORDER BY determines the order of the data retrieval output. The order of the clauses in a SELECT statement cannot be changed, although some of the clauses are optional (enclosed in [] in the above syntax).

5 Joining Tables

5.1 Cartesian Product

5.1.1 Multiple tables in the FROM clause

There may be instances when a query requires information from two or more tables to be collated in some way, for example, to find out who owns each property. This would require the information in the **property** table to be combined with information from the **owner** table.

To two or more tables together, SQL implements the equivalent of the mathematical operation Cartesian Product. This is written in SQL by listing the tables to be connected in the FROM clause, separated by commas.

A multi-table FROM statement is of the form:

```
FROM tablename [,tablename [,tablename ...
```

A query to combine the **property** and **owner** tables would look like this:

```
SELECT *
FROM property, owner;
```

This would produce the following results:

propertyno	street	country	type	rooms	rent	yearincome	property.ow	owner.own	fname	lname	address
PA14	16 Holhead	Barbados	Villa	6	500	12000	CO46	CO46	Joe	Keogh	2 Fergus Dr, Aberdeen, AB2 7S
PA14	16 Holhead	Barbados	Villa	6	500	12000	CO46	CO87	Carol	Farrel	6 Achray St, Glasgow, G32 9DX
PA14	16 Holhead	Barbados	Villa	6	500	12000	CO46	CO40	Tina	Murphy	63 Well St, Glasgow, G42
PA14	16 Holhead	Barbados	Villa	6	500	12000	CO46	CO93	Tony	Shaw	12 Park Pl, Glasgow, G4 0QR
PL94	6 Argyll St	Barbados	Villa	4	550	15000	CO93	CO46	Joe	Keogh	2 Fergus Dr, Aberdeen, AB2 7S
PL94	6 Argyll St	Barbados	Villa	4	550	15000	CO93	CO87	Carol	Farrel	6 Achray St, Glasgow, G32 9DX
PL94	6 Argyll St	Barbados	Villa	4	550	15000	CO93	CO40	Tina	Murphy	63 Well St, Glasgow, G42
PL94	6 Argyll St	Barbados	Villa	4	550	15000	CO93	CO93	Tony	Shaw	12 Park Pl, Glasgow, G4 0QR
PG4	6 Lawrence St	Barbados	Villa	4	525	14050	CO87	CO46	Joe	Keogh	2 Fergus Dr, Aberdeen, AB2 7S
PG4	6 Lawrence St	Barbados	Villa	4	525	14050	CO87	CO87	Carol	Farrel	6 Achray St, Glasgow, G32 9DX
PG4	6 Lawrence St	Barbados	Villa	4	525	14050	CO87	CO40	Tina	Murphy	63 Well St, Glasgow, G42
PG4	6 Lawrence St	Barbados	Villa	4	525	14050	CO87	CO93	Tony	Shaw	12 Park Pl, Glasgow, G4 0QR
PG36	2 Manor Rd	Barbados	Studio	1	475	11075	CO93	CO46	Joe	Keogh	2 Fergus Dr, Aberdeen, AB2 7S
PG36	2 Manor Rd	Barbados	Studio	1	475	11075	CO93	CO87	Carol	Farrel	6 Achray St, Glasgow, G32 9DX
PG36	2 Manor Rd	Barbados	Studio	1	475	11075	CO93	CO40	Tina	Murphy	63 Well St, Glasgow, G42
PG36	2 Manor Rd	Barbados	Studio	1	475	11075	CO93	CO93	Tony	Shaw	12 Park Pl, Glasgow, G4 0QR
PG21	18 Dale Rd	St Kitts	Apartment	3	450	9500	CO40	CO46	Joe	Keogh	2 Fergus Dr, Aberdeen, AB2 7S
PG21	18 Dale Rd	St Kitts	Apartment	3	450	9500	CO40	CO87	Carol	Farrel	6 Achray St, Glasgow, G32 9DX
PG21	18 Dale Rd	St Kitts	Apartment	3	450	9500	CO40	CO40	Tina	Murphy	63 Well St, Glasgow, G42
PG21	18 Dale Rd	St Kitts	Apartment	3	450	9500	CO40	CO93	Tony	Shaw	12 Park Pl, Glasgow, G4 0QR
PG16	5 Novar Dr	Antigua	Apartment	2	400	8000	CO87	CO46	Joe	Keogh	2 Fergus Dr, Aberdeen, AB2 7S
PG16	5 Novar Dr	Antigua	Apartment	2	400	8000	CO87	CO87	Carol	Farrel	6 Achray St, Glasgow, G32 9DX
PG16	5 Novar Dr	Antigua	Apartment	2	400	8000	CO87	CO40	Tina	Murphy	63 Well St, Glasgow, G42
PG16	5 Novar Dr	Antigua	Apartment	2	400	8000	CO87	CO93	Tony	Shaw	12 Park Pl, Glasgow, G4 0QR

With many more fields not shown.

Activity: Try this query out and verify that it performs as suggested

In fact, the Cartesian Product merges every row from every table together – the **property** table contains 6 records, the **OWNER** table contains 4 records, hence the final query results in $6 \times 4 = 24$ records. The database cannot assume (or deduce) how the table should be connected. To do this an extra term must be added to the **WHERE** clause, specifying which two (or more) columns should contain values that are to be compared in some way (typically using equality '=').

With this example, it is clear that there are two columns that should be matched to produce the correct results – the **property** table contains an **ownerno** column, the **owner** table contains an **ownerno**. Only those rows which contain the same value should be retained.

A correct version of the **SELECT** clause for this example would look like this:

```
SELECT *  
FROM property, owner  
WHERE property.ownerno=owner.ownerno;
```

Notice how we have to refer to the different **ownerno** attributes using the **tablename.columnname** syntax. This is required as the two tables share a same named column heading **OWNERNO**.



360°
thinking.

Deloitte.

Discover the truth at www.deloitte.ca/careers

© Deloitte & Touche LLP and affiliated entities.



propertyno	street	country	type	rooms	rent	yearincome	property.ownerno	owner.ownerno	fname	lname
PA14	16 Holhead	Barbados	Villa	6	500	12000	CO46	CO46	Joe	Keogh
PL94	6 Argyll St	Barbados	Villa	4	550	15000	CO93	CO93	Tony	Shaw
PG4	6 Lawrence St	Barbados	Villa	4	525	14050	CO87	CO87	Carol	Farrel
PG36	2 Manor Rd	Barbados	Studio	1	475	11075	CO93	CO93	Tony	Shaw
PG21	18 Dale Rd	St Kitts	Apartment	3	450	9500	CO40	CO40	Tina	Murphy
PG16	5 Novar Dr	Antigua	Apartment	2	400	8000	CO87	CO87	Carol	Farrel

Here it is clear from the two **ownerno** columns that the records have been matched in the correct sequence.

Activity: Try out the refined query and verify that it produces this result.

```
SELECT *
FROM property, owner
WHERE property.ownerno=owner.ownerno;
```

To join *three* tables it is normally necessary to specify *two* join conditions, *four* tables usually require *three* join conditions etc.

Temporary labels may be specified in the FROM clause to save repeating the full table names repeatedly in the query:

```
SELECT *
FROM property p, owner o
WHERE p.ownerno=o.ownerno;
```

Other Boolean operators to specify a further subset of the selection can be appended as normal:

```
SELECT *
FROM property p, owner o
WHERE p.ownerno=o.ownerno AND p.type="Villa";
```

5.1.2 Join and Cartesian Product Examples

Activity: Type these example queries in and verify that they produce similar results.

Examples

Display property number, owner number and the address of the owner.

```
SELECT propertyno, owner.ownerno, address
FROM property, owner
WHERE property.ownerno=owner.ownerno;
```

propertyno	ownerno	address
PA14	CO46	2 Fergus Dr, Aberdeen, AB2 7SX
PL94	CO93	12 Park Pl, Glasgow, G4 0QR
PG4	CO87	6 Achray St, Glasgow, G32 9DX
PG36	CO93	12 Park Pl, Glasgow, G4 0QR
PG21	CO40	63 Well St, Glasgow, G42
PG16	CO87	6 Achray St, Glasgow, G32 9DX

Note that the **ownerno** must be prefixed with the tablename **owner** – this is to clarify which department number is included in the output.

Find out where the Mr Keogh is based.

```
SELECT propertyno, owner.ownerno, address
FROM property, owner
WHERE property.ownerno=owner.ownerno
AND lname="Keogh";
```

propertyno	ownerno	address
PA14	CO46	2 Fergus Dr, Aberdeen, AB2 7SX

Find all the property numbers and their owner names that are Villas.

```
SELECT propertyno, lname, fname, type
FROM property, owner
WHERE property.ownerno=owner.ownerno
AND type="Villa";
```

propertyno	lname	fname	type
PA14	Keogh	Joe	Villa
PL94	Shaw	Tony	Villa
PG4	Farrel	Carol	Villa

5.2 Exercises – Join, Selection and Projection

In the following exercises, the query must be specified to produce the suggested result. There are spaces for you to write the SQL query. Use the AS command to get correct column headings in SQL.

1. Display the owner first name and country of their properties.

SQL:

fname	country
Joe	Barbados
Tony	Barbados
Carol	Barbados
Tony	Barbados
Tina	St Kitts
Carol	Antigua

2. Display the owner first and last name for Apartments in Antigua.

SQL:

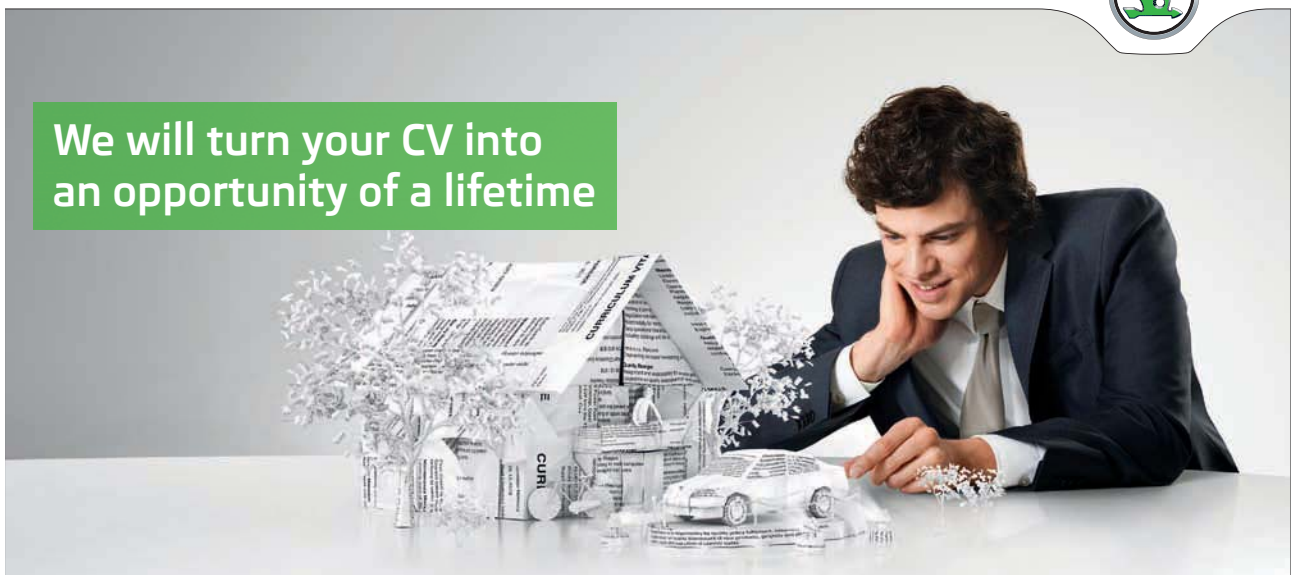
fname	lname
Carol	Farrel

SIMPLY CLEVER

ŠKODA



We will turn your CV into an opportunity of a lifetime



Do you like cars? Would you like to be a part of a successful brand? We will appreciate and reward both your enthusiasm and talent. Send us your CV. You will be surprised where it can take you.

Send us your CV on www.employerforlife.com



3. Display the property number and owner number for all Villas.

SQL:

propertyno	ownerno	type
PA14	CO46	Villa
PL94	CO93	Villa
PG4	CO87	Villa

4. Display the properties and their owner details with a rental income between £460 and £530.

SQL:

owner.own	fname	lname	address	telno	propertyno	street	country	type	rooms
CO46	Joe	Keogh	2 Fergus Dr, Aberdeen, AB2 7SX	01224-861212	PA14	16 Holhead	Barbados	Villa	
CO87	Carol	Farrel	6 Achray St, Glasgow, G32 9DX	0141-357-7419	PG4	6 Lawrence St	Barbados	Villa	
CO93	Tony	Shaw	12 Park Pl, Glasgow, G4 0QR	0141-225-7025	PG36	2 Manor Rd	Barbados	Studio	

5. Display the employee client number, client last name, their booking date, the property number of the booked property, the country that the booked property is in and the clients preference type (Hint – you need to use 3 tables)

SQL:

clientno	lname	bookingdate	propertyno	country	preftype
CR56	Stewart	16/07/2007	PA14	Barbados	Apartment
CR76	Kay	09/07/2007	PG4	Barbados	Villa
CR56	Stewart	17/12/2007	PG4	Barbados	Apartment
CR62	Tregear	03/09/2007	PA14	Barbados	Villa
CR56	Stewart	10/09/2007	PG36	Barbados	Apartment

6. Display all the owners first, last names, type and property number whose property type are Villa and Apartments (Hint – you need to use brackets in the WHERE clause after the AND)

SQL:

fname	lname	type	propertyno
Joe	Keogh	Villa	PA14
Tony	Shaw	Villa	PL94
Carol	Farrel	Villa	PG4
Tina	Murphy	Apartment	PG21
Carol	Farrel	Apartment	PG16

5.3 Summary

More often than not SQL queries need to combine information from two or more tables. To join records two or more tables together, SQL implements the equivalent of the mathematical operation *Cartesian Product*. This is written in SQL by listing the tables to be connected in the `FROM` clause, separated by commas.

A multi-table `FROM` statement is of the form:

```
FROM tablename [,tablename [,tablename ...]]
```

Recall that the general form for the complete `SELECT` statement is:

```
SELECT [DISTINCT | ALL] {*| column [AS new_name]} [, ...]
FROM Tablename [alias] [, tablename]...
[WHERE conditional statement]
[GROUP BY column_list] [HAVING condition]
[ORDER BY column_list]
```

When records are retrieved from more than one table the `WHERE` clause **MUST** contain a conditional statement indicating the keys which the tables are joined on. For example;

```
SELECT *
FROM property, owner
WHERE property.ownerno=owner.ownerno;
```

6 Functions, Aggregate and Group-set Functions

This chapter will show you how to create functions, manipulate and extract certain information from the database using more advanced SQL queries.

6.1 Functions

Functions fall into four categories:

- String functions
- Arithmetic functions
- Date functions
- Aggregate or group-set functions

Many string functions work on arithmetic expressions and dates, and then automatically convert them to a string format. Note that Microsoft products typically use operators and functions from Visual Basic rather than the SQL standard.



I joined MITAS because
I wanted **real responsibility**

The Graduate Programme
for Engineers and Geoscientists
www.discovermitas.com

Month 16
I was a construction
supervisor in
the North Sea
advising and
helping foremen
solve problems

Real work
International opportunities
Three work placements



6.1.1 String Functions

String concatenation: string1 & string2

Joins string1 with string2. Note that the AS command is needed to produce a sensible column name. Different symbols are used for differing product: & (Microsoft) or || (SQL standard).

```
SELECT fname & " " & lname AS combined
FROM owner;
```

combined
Tina Murphy
Joe Keogh
Carol Farrel
Tony Shaw

Length: Length(string) or Len(string) (Microsoft)

Determines the length of a string e.g. this will tell you how many characters are in the lname – MURPHY has 6 letters in it.

```
SELECT lname, len(lname)
FROM owner;
```

lname	Expr1001
Murphy	6
Keogh	5
Farrel	6
Shaw	4

Substring: substr(string, x, y) or mid(string, x, y) (Microsoft)

Extracts a string of length y from the string starting at position x.

E.g.: mid(“hello”,2,3) would return “ell”. This starts at letter 2 e.g. E and then takes 3 letters from there in total.

```
SELECT lname, Mid(lname,2,3)
FROM owner;
```

lname	Expr1001
Murphy	urp
Keogh	eog
Farrel	arr
Shaw	haw

6.1.2 Arithmetic Functions

Greatest value: `greatest(columnname)` or `max(columnname)` (Microsoft)

Returns the greatest value in a column.

```
SELECT max(rent)
FROM property;
```

Expr1000
550

Least value: `least(columnname)` or `min(columnname)` (Microsoft)

Returns the least value in a column.

```
SELECT min(rent)
FROM property;
```

Expr1000
400

Power: `power(x,y)` or `x^y` (Microsoft)

Returns x to the power y. In this case it is to the power of 2. If we use MURPHY, it has 6 characters and to the power of 2 means times 6 × 6 and will return 36. If it was to the power of 3, it would be 6 × 6 × 6.

```
SELECT len(lname)^2
FROM owner;
```

Expr1000
36
25
36
16
*

Round: `round(x,y)`

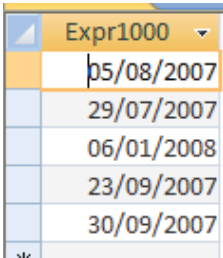
Rounds the number x to y places (not available in Access 97). The below example will divide rent by 2.3 and return only 2 places after the decimal point.

```
SELECT round(rent/2.3, 2)
FROM property;
```

Expr1000
217.39
173.91
195.65
206.52
228.26
239.13

6.1.3 Date Functions

To increase or decrease a date: Use + or – a number of days.

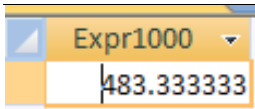
<pre>SELECT bookingdate+20 FROM booking;</pre>	
--	---

Subtract one date from another: Use date – date .

6.2 Aggregate Functions

Aggregate functions operate on a number of rows (for example a whole table).

Calculate an average: avg (x) , where x is generally a column.

<pre>SELECT avg(rent) FROM property;</pre>	
--	---



ie business school

#1 EUROPEAN BUSINESS SCHOOL
FINANCIAL TIMES 2013

#gobeyond

MASTER IN MANAGEMENT

Because achieving your dreams is your greatest challenge. IE Business School's Master in Management taught in English, Spanish or bilingually, trains young high performance professionals at the beginning of their career through an innovative and stimulating program that will help them reach their full potential.

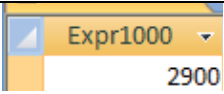
- Choose your area of specialization.
- Customize your master through the different options offered.
- Global Immersion Weeks in locations such as London, Silicon Valley or Shanghai.

Because you change, we change with you.

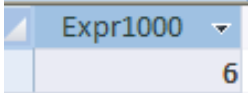
www.ie.edu/master-management | mim.admissions@ie.edu | 



Calculate the **total** of numbers in a column: `sum (x)`, where x is generally a column.

<pre>SELECT sum(rent) FROM property;</pre>	
--	--

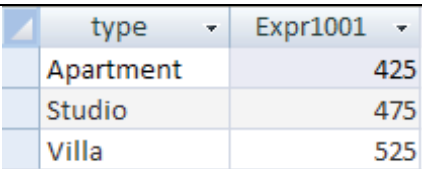
Count a number of items: `count (x)`, where x is a column.

<pre>SELECT count(rent) FROM property;</pre>	
--	--

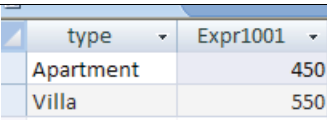
6.2.1 Grouping with Aggregate Functions

Aggregate functions may be applied to several subsets of the table. The `GROUP BY` clause divides (sorts) a table into groups of rows with matching values in the same column (or columns).

Example: Calculate the average rent for each different type of property

<pre>SELECT type, avg(rent) FROM property GROUP BY type;</pre>	
--	---

Example: Calculate the average rent for each different type of property

<pre>SELECT type, max(rent) FROM property WHERE type <> "Studio" GROUP BY type;</pre>	
---	--

6.3 Nested Sub-queries

When one of the conditions of a `WHERE` clause is a query itself, this is called a nested sub-query, e.g.,

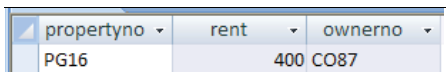
```
SELECT select-list
FROM table(s)
WHERE object operator (SELECT select-list
                        FROM table(s)
                        [WHERE condition]);
```

The sub-query must be enclosed in (), as indeed must any levels of nested sub-query.

Example:

To find the owner number who charges the lowest rental figure, the query must first calculate the lowest rent and then find the person who has the lowest rental figure.

This is a consequence of not being able to place both non-aggregated columns and aggregate functions in the same select list.

<pre>SELECT propertyno, rent, ownerno FROM property WHERE rent=(select min(rent) from property);</pre>	 <table border="1" style="margin-left: auto; margin-right: auto;"> <thead> <tr> <th>propertyno</th> <th>rent</th> <th>ownerno</th> </tr> </thead> <tbody> <tr> <td>PG16</td> <td>400</td> <td>CO87</td> </tr> </tbody> </table>	propertyno	rent	ownerno	PG16	400	CO87
propertyno	rent	ownerno					
PG16	400	CO87					

The nested query is executed first and the value retrieved is 'substituted' into the WHERE clause.

Note that sub-queries may be nested to any number of levels e.g.,

```
SELECT select-list
FROM table(s)
WHERE object operator (SELECT select-list
                        FROM table(s)
                        [WHERE object operator
                        (SELECT select-list
                        FROM table(s)
                        [WHERE condition]]]);
```

6.4 Exercises

1. Display the details for the latest booking date

SQL:

clientno	propertyno	bookingdate	comment
CR56	PG4	17/12/2007	

2. Display the lowest yearly income earned by properties in Barbados

SQL:

Expr1000
11075

3. Display the property number with the highest year income for a Villa

SQL:

propertyno
PL94

4. Find the average year income for Villas

SQL:

Expr1000
13683.3333

5. List the minimum and maximum year incomes for each property type

SQL:

Expr1000	Expr1001	type
8000	9500	Apartment
11075	11075	Studio
12000	15000	Villa

6. Find the average year income (name the new column `avgyearincome`) and average rent (name the new column `avgrent`) for each property type, grouped by property type

SQL:

avgyearincome	avgrent	type
8750	425	Apartment
11075	475	Studio
13683.3333333333	525	Villa

6.5 Summary

In this chapter you learnt how to create functions, manipulate and extract certain information from the database using more advanced SQL queries. Generally speaking functions used in SQL fall into four categories:

- String functions, such as `len(..)`, `&`, `substr(..)`, `mid(...)` , etc.
- Arithmetic functions, such as `round(..)`, `sum(..)`, etc.
- Date functions, such as + and – operations on dates
- Aggregate or group-set functions, such as `count()`, `avg()`, etc.

The `GROUP BY` clause divides (sorts) a table into groups of rows with matching values in the same column (or columns).

7 Information Security Management

7.1 Introduction

From the business perspective information has its value and thus has become an *asset*. Therefore just as any other type of business assets, it needs to be protected. Businesses are continuously exposed to an ever increasing range of *threats* to their information. Ranging from human error, equipment theft and physical destruction, modern threats to information security extend to sabotage, fraud, vandalism and terrorism. Furthermore, risks to modern organisations grow as companies operate in a complex interconnected world where the pace of evolving technologies is staggering.

The burning question is how a business can secure its information assets? The term *information security* refers to safeguarding or protecting information assets from threats that may harm valuable information. In order to protect information, the *infrastructure*, which supports information, including communication networks, systems and processes relevant to managing information, needs to be protected as well.



"I studied English for 16 years but...
...I finally learned to speak it in just six lessons"

Jane, Chinese architect

ENGLISH OUT THERE

Click to hear me talking before and after my unique course download



Information security is often regarded as the level of confidence of being protected or bringing risks to a minimum via establishing of controls and security measures. Besides hardware and software controls, businesses address information security through policies, procedures and organisational structures. In order to protect and derive maximum value from their information assets, businesses need to develop and continuously monitor comprehensive security controls. In this chapter we will discuss best practice approaches and international standards explaining what a business can do to protect its information assets, but firstly it is important to make the business case for information security management and go over some essential terminology.

Information security also implies the existence of *vulnerabilities* (known or yet unknown) in a system which impose risks to information assets. Vulnerability pertains to a weakness/ flaw in a system making an attack or an unintentional compromise of data possible. Existence of vulnerabilities in a system leads to risks, for example, if a bug (or an error) in an application is not fixed (or patched) the application is at risk from hackers exploiting this vulnerability. As shown in figure 1 information assets can have various vulnerabilities which may ultimately result in compromises of valuable business information. The term *compromise* indicates that an information asset was impacted in an undesired manner. As the result of compromises the state of information may change (e.g. transactional records in a corporate database can be fully or partially destroyed by malicious code attack), or remain intact (e.g. credit card information stolen by a hacker in the wireless network of a department store); however in both cases information assets are maliciously impacted, i.e. compromised, through attacks exploiting existing vulnerabilities in information systems.

Threats, Vulnerabilities and Compromises

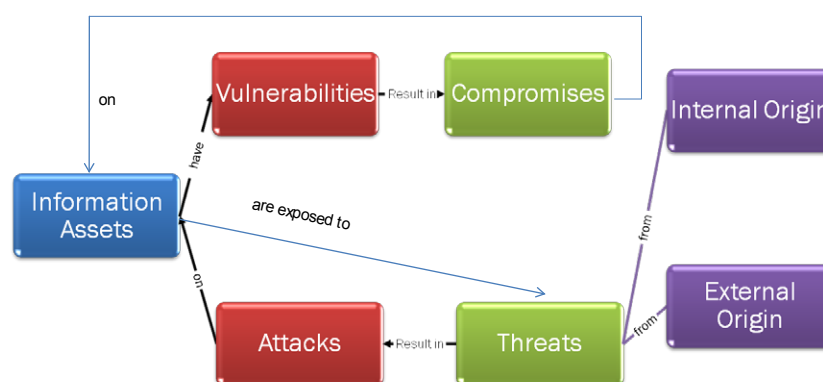


Figure 1. Threats, Vulnerabilities and Threats to Information Assets.

Information is constantly exposed to *threats* of either internal (including poorly trained personnel, espionage, human error, etc.) or external origin to organisations (such as malicious code, hacking, denial of service attacks and many, many others). Whether a threat results in a successful *attack* on information largely depends on existing vulnerabilities in information systems. If information is secured, thereby bringing vulnerabilities to a minimum, attacks threatening information assets are likely to be detected and prove unsuccessful.

Actions taken to protect information or a system from threats and ensure its security are known as *countermeasures*. They are deployed to minimise risks of attacks and to reduce vulnerabilities. Generally, security measures may be classified by their nature into physical and logical. *Physical security measures* safeguard information assets by preventing physical theft, loss or damage of equipment where data is stored or processed. *Logical security measures* pertain to soft methods of information protection. For example, data stored on a company's database server is usually protected by logical countermeasures such as encryption and access to it is open only to authorised employees. A range of methods for ensuring logical security may be employed for protection of a company's database. On the other hand, corporate data may be compromised by someone breaking into the building, stealing data directly from hard disks or damaging corporate hardware. To prevent damage or theft of the database server hardware physical access into the area may be restricted by locks, alarms and other physical measures. In this unit, we will be principally referring to logical security measures although most modern security control frameworks comprehensively address both logical and physical information security management.

Measures introduced to guard information against attacks are often referred to as *controls*. For example, amount of overtime hours entered by an employee into a company's financial system is subject to verification against the maximum overtime hours possible. This represents an internal control ensuring that correct information is entered into the system and preventing abuse. Controls intrinsic to a specific organisation are called *internal controls* as they are located within the boundary of an organisation. We also need to draw attention to the fact that control is not an event, it is a business process itself. If it is a process, then it has specific objectives (e.g. minimising risks posed by internal or external information security threats) and is managed by people (e.g. managers, IT department, etc.). Hence the threefold nature of the information security subject encompassing logical/physical countermeasures, people and processes in a business.

The Internet underpins a considerable amount of business activity, radically changing traditional business models and enabling new global economic opportunities. It has transformed the way in which people access information, socialise and entertain themselves. It has enabled a positive transformation of society and the very existence of the knowledge economy. However, the technology behind Internet communications and the general lack of an in-depth understanding of how it works by the majority of users creates significant risks. The invisibility of Internet technology to end users generates risks and facilitates criminal activity including industrial espionage, threats to business continuity and risks of services failure. In the next section we will look into the types of Internet risks and consequences of information security failures.

7.2 Internet Security Threats: Known, Unknown and Predicted

“It takes many good deeds to build a good reputation and only one bad to lose it.”

Benjamin Franklin

Managing information security measures is a complex task. One may notice that it is impossible to bring information risks to zero as it is impossible to know all information system vulnerabilities or predict threats to information which may emerge in the future. When a security breach occurs, it may go unnoticed for quite sometime, however its consequences to business may be enormous. According to research from Weber Shandwick (2007) it may take a business up to 3.6 years to recover the damage to its reputation. Information security breaches are frequently becoming the cause of damaged reputation and loss of consumer or trading partner confidence.

Excellent Economics and Business programmes at:



university of
 groningen



**“The perfect start
of a successful,
international career.”**

CLICK HERE
to discover why both socially
and academically the University
of Groningen is one of the best
places for a student to be

www.rug.nl/feb/education



Time Estimated to Fully Recover Damaged Reputation



Figure 2. Reputational Risks: Hard to Calculate (Weber Shandwick 2007).

Threats to information assets, increasingly originating on the Internet, are becoming more sophisticated, more frequent and more dangerous. Teenage hackers of the past have given their place to organised cybercriminals who aim at capitalising on theft, putting companies out of business, or even committing terrorism.

A major cause of cybercriminal activity on the Internet, whether sending spam email or perpetrating a denial of service attack, is caused by the distribution of malware on individual computers. Malware, or malicious code, used to be categorised into *viruses* which propagate by means of legitimate Internet traffic such as emails and *worms* which infect computers without human interference. As the threats of malware continue to rise, both terms are being used now almost interchangeably. Malware origin can still include email, or interconnection to other machines and storage devices – but an important new venue of infection is from browsing a website, intentionally designed to infect other machines. Malware now comes in all shapes and sizes initially fuelled by intentions of irresponsible individuals to gain celebrity status among peers. The notorious “ILOVEYOU” worm attack could serve as such example as the malware was created in by a disaffected student in the Philippines in 2000. Today most frequently the development of malicious code is profit-driven, i.e. intends to leverage infected computers in order to make money. MPack, exploiting client-side vulnerabilities of individuals visiting a compromised web-site, was one of the newly emerged types of malware. It was professionally developed, supported and available commercially in 2007. Increasingly, malware is being designed to be undetected for the machine’s owner and capable of spreading in a sublime manner. The purpose of a malicious code can be to search the hard disk of a compromised computer to steal keys, passwords for systems and other confidential information. To enable continuous capture of secret information, malware may install a *keylogger* (a programme which records any keyboard activity including capturing websites visited and passwords used for information systems or online banking), permitting the criminal to compromise personal and corporate information.

Infecting computers with malicious code is frequently done in order to create a *botnet* consisting of individual computers known as *zombies*. A *botmaster* makes the infected computers operate as a network with a malicious purpose, such as sending spam, hosting an illegal website or perpetrating other types of attacks. Owners of the individual computers are often unaware of the illegal activity taking place, although the origin of the malicious actions can be traced back to the unsuspecting victims.

The intrinsic design of the Internet allows the increasing of *distributed denial of service attacks (DDoS)*. In this case, many computers running malicious programs or an entire botnet directs communication traffic to a single web server, in which case the latter becomes overloaded with traffic and fails to respond to legitimate requests. In most cases DDoS are not aimed at individual computers but threaten the integrity of business networks, government and domain names. Although historically networks are built with an enormous over-capacity to accommodate such traffic, cases of DDoS attacks frequently affect business continuity due to incapacitating their Internet operations.

In recent years online financial services have been affected by an increasing number of phishing attacks. For the first time the term *phishing* was used in 1996 in relation to the incidents of passwords disclosed as a result of email deception of America Online (AOL) customers. It appears that recently there has been a shift towards phishing by means of misrepresentation of legitimate websites of financial institutions, online storefronts or service providers by their illegitimate replicas. For a regular consumer such fraudulent websites are rather difficult to distinguish from the original ones. The figure below illustrates how close a phishing website could appear to the original one.

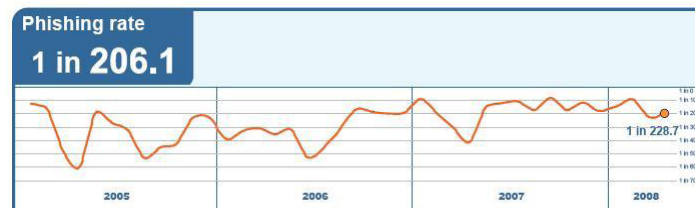


Figure 3. Phishing Rates 2005–2008 (MessageLabs 2008)

Again the technical aspect of such impersonation is rather unsophisticated and relies on the unsuspecting victims giving up confidential information to the fraudulent site instead of the legitimate financial institution or storefront. The phisher's intention is to angle for confidential information that the victim has access to, including PayPal and bank account numbers, username and passwords, debit and card numbers. Some attacks may be disguised as alerts about payment due or data verification. The damage cause by phishing attacks is growing. In 2005 in the UK the losses caused by phishing attacks amounted to £504 million. The United States damage due to phishing reached nearly one billion dollars. According to a report from MessageLabs (2008) one in 206.1 emails (or .49%) comprised a phishing attack and numbers are going up. As shown in figure 3, when compared to the to the proportion of the all the threats delivered through email traffic such as viruses and worms, the number of phishing emails reached 87.1% of all email-borne malware. Phishing is a global trend in Internet attacks with most United Kingdom banks reporting growing losses from direct online banking fraud reaching £33.5 million in 2006. Although considerably smaller than online banking fraud figures for same years in the United States, the United Kingdom trend continues to rise from £12.2 million in 2004, £23.2 million in 2005 and growing steadily.



American online
LIGS University
is currently enrolling in the
Interactive Online **BBA, MBA, MSc,**
DBA and PhD programs:

- ▶ enroll **by September 30th, 2014** and
- ▶ **save up to 16%** on the tuition!
- ▶ pay in 10 installments / 2 years
- ▶ Interactive **Online** education
- ▶ visit www.ligsuniversity.com to find out more!

Note: LIGS University is not accredited by any nationally recognized accrediting agency listed by the US Secretary of Education. More info [here](#).



Traditional countermeasures such as anti-virus software (which determine whether a piece of code is known to be malicious) continue to be used, although they no longer present a silver bullet solution as they once did. Faced with the escalating numbers of new malware the anti-virus companies have joined forces. Collectively they prioritise, process and shut down the most dangerous malware and the most widespread. For instance, Symantec Corp. employs 40,000 sensors monitoring Internet activity and gathering malicious code reports. They have observed that the current security threat landscape is characterised by the following:

- Increased professionalised and commercialisation of malicious activities
- Threats that are increasingly tailored for specific regions
- Attackers targeting victims by first exploiting trusted websites
- Convergence of attack methods (Source: Symantec Internet Security Threat Report 2007).

7.3 Brand Protection on the Internet

Brand protection, encompassing trademarks and intellectual property, is becoming increasingly challenging in the digital world. The global reach of the Internet and exponential growth of online transactions make brand protection immensely more complex in the modern world. According to Forrester Research in 2007, \$175 billion worth of goods and services were purchased online. In 2008 this figure reached \$204 and is predicted to grow further (MarkMonitor 2007). Unfortunately, sales of counterfeit goods are expected to rise as well. Fraudsters are eagerly exploiting such benefits of the Internet as global reach, anonymity, ease of replication of images, trademarks and intellectual property from original brand owners. The impact of Internet sales of counterfeit goods pose considerable threats to a number of stakeholders including:

- Brand owners experiencing loss of revenue and market share, erosion of brand equity, loss of customer trust.
- Retailers and distributors affected by the profit margin erosion and brand value reduction.
- Customers inadvertently deceived by fraudulent goods lose trust in genuine articles, as well as may be exposed to health and safety risks imposed by lower quality products.
- Governments impacted through the loss of tax revenue, bearing increased costs of enforcement and surveillance.
- Workers concerned about job losses.

Internet sales of fraudulent goods produce a multitude of concerns for corporate brand owners beyond major losses of revenue. The range of problematic issues include product liability lawsuits, inability to recover research and development costs of products, compliance problems as government guidelines call for disclosure of threats to revenue including those caused by counterfeit sales.

To mitigate threats of online fraud and timely uncover violations strong control measures must be in place to address counterfeit issues in a proactive manner. An approach to online brand protection depicted in figure 4 illustrates a holistic approach to ensure security or restoring confidence in online sales channels.

The approach of online brand protection comprises of three phases as follows (MarkMonitor, 2007):

Prevention of Online Channel Abuse.

For established brands it is important to prevent online abuse by managing domain name registrations which may impinge upon a company's brand.

- Continuous monitoring of domain names, defensive acquisition of domain names owned by unfamiliar third parties are among the necessary actions for management of online brands.
- Conducting a gap analysis of domain names and identification of potentially harmful domain names which may be used for phishing attacks or divert traffic from the branded domain.

Detection of Online Channel Abuse.

Online channel abuse may come from a multitude of sources including auction sites, high volume B2B exchanges, general electronic storefronts, etc. – Detection of online channel abuse is carried out by automatic applications scanning through online channels for counterfeit goods specific to the corporate brand.

- Scanning for links, images, scam emails and domain names luring consumers to counterfeit sites constantly gathers information from the Internet traffic.
- Having detected the origin of the brand abuse, it is possible to identify the offenders.

Response to Online Channel Abuse.

- Continuous monitoring of the Internet provides sufficient information related to fraud to respond to brand infringement.
- These actions include sending Cease and Desist (C&D) letters, delisting requests to auction sites as well as warnings. Corporations increasingly emphasise significance of their brands and press for legal actions against the offenders.

Proactive Brand Protection Approach

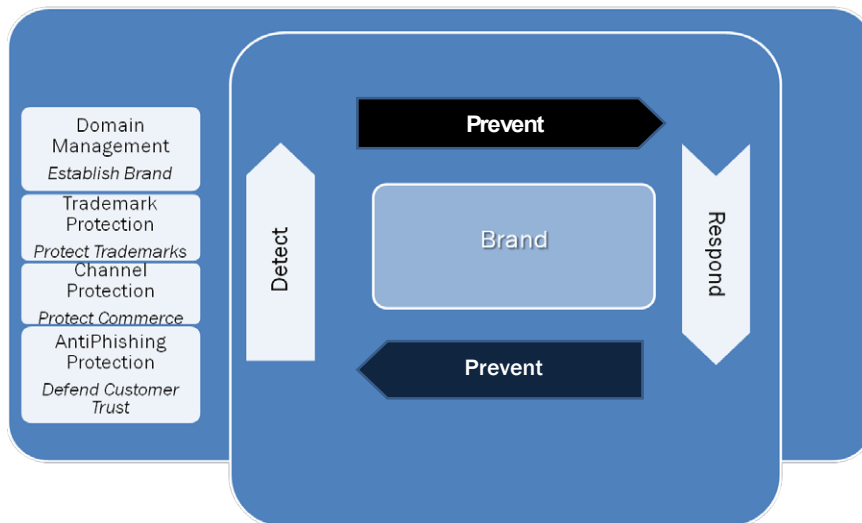


Figure 4. Holistic Approach to Online Brand Protection.

The process of online brand protection is rather complex. Corporations, especially Fortune 100 companies, tend to outsource prevention of online channel abuse. Service providers, such as MarkMonitor delivering solutions to 50 from the Fortune 100 companies, execute all phases of proactive brand management using automated methods.

.....Alcatel-Lucent

www.alcatel-lucent.com/careers

What if you could build your future and create the future?

One generation's transformation is the next's status quo. In the near future, people may soon think it's strange that devices ever had to be "plugged in." To obtain that status, there needs to be "The Shift".

7.4 Compliance Issues

There are two main reasons why information assets need to be protected. First being the ever increasing probability for information to be compromised either externally or internally, intentionally or accidentally. The second reason rests with the regulatory requirements, the necessity for compliance with legislation concerning information collection, use and protection. Violation of regulation may be detrimental to business not only in legal terms, but also lead to significant damage to reputation and image. For today's business it is imperative to have established controls in place which ensure compliance with the requirements set forth by regulatory bodies and government.

A recent security breach at one of well-known companies (further referred as Company A) was closely followed by US government and undoubtedly caused a great deal of financial and reputational damage to the business. A laptop containing customer records was lost by one of the Company's employees. This is an extract from the Attorney General's Office (2006) letter to Company A:

Please provide written answers to the following questions:

Prior to the breach of this data, what measures did Company A take to safeguard individuals' personally identifying information;

Please indicate if and when Company A first notified criminal authorities about this data breach;

Please describe in detail how Company A laptop containing this personal data was compromised;

Please describe in detail the categories of information compromised by the data breach from Company A laptop, such as, but not limited to, name, address, phone number, date of birth, driver's license number or other personal information;

Please describe all steps that Company A has taken to track down and retrieve the personally identifying information;

Please identify all steps Company A has taken or will take to contact and warn consumers that their personally identifying information may have been compromised, including but not limited to, when and how Pfizer first notified consumers of this data breach;

Please identify what, if any, regulatory scheme Company A follows when responding to security breaches;

Please describe Company A's general corporate policies regarding securing computer systems, facilities, and personally identifying information.

These are some difficult questions to answer. The business impact of information security breaches is significant and definitely measurable in financial terms. Without a structured assessment of the company's business risks and establishment of rigid controls an enterprise may be at higher risk from both external threats and regulatory compliance.

In the UK the Data Protection Act (1998) and Human Rights Act (1998) set out the legal framework to safeguard privacy and establish the legal basis for the management of information and the right of the individual to privacy. The Freedom of Information Act (2000) provides the public 'right to know' in relation to public bodies.

In the US as a reaction to the significant number of corporate scandals related to financial information reporting in the late 1990s government instituted the Sarbanes-Oxley Act. This Act, relevant to all publicly traded companies in the US, stipulates how corporate financial information is to be reported and provides relevant Corporate Governance regulations. Principally, the Sarbanes-Oxley Act requires companies to have internal control systems to ensure disclosure of accurate financial information. As companies increasingly rely on IT for secured storage, accurate processing and management of financial data and documentation, enterprises need to establish effective IT controls, identify and assess information risks effectively. Some of the most widely recognised frameworks addressing IT governance and information risks management are covered in the next section of this unit. Their objectives are to ensure that management internal control activities are in place in order to draw value from corporate IT resources, achieve compliance and mitigate IT risks in an enterprise.

Join the best at the Maastricht University School of Business and Economics!

Top master's programmes

- 33rd place Financial Times worldwide ranking: MSc International Business
- 1st place: MSc International Business
- 1st place: MSc Financial Economics
- 2nd place: MSc Management of Learning
- 2nd place: MSc Economics
- 2nd place: MSc Econometrics and Operations Research
- 2nd place: MSc Global Supply Chain Management and Change

Sources: Keuzegids Master ranking 2013; Elsevier 'Beste Studies' ranking 2012; Financial Times Global Masters in Management ranking 2012

**Visit us and find out why we are the best!
Master's Open Day: 22 February 2014**

Maastricht University is the best specialist university in the Netherlands (Elsevier)

www.mastersopenday.nl



7.5 Frameworks for Control and Security: COBIT®, ITIL®, and ISO 27002

Over the years three rather different, but widely accepted, IT governance frameworks have been developed. They are COBIT®, ITIL® and ISO 27002. Each of these frameworks was developed in a different country and by a third party, i.e. these frameworks are vendor-independent. Although any of these frameworks may not serve as a silver bullet to resolving information security risks, each has its fortes in IT governance.

Control Objectives for Information and related Technology, or COBIT® is increasingly popular framework of practices for IT, internal information controls and risks mitigation. COBIT, developed by America's IT Governance Institute, aims to facilitate implementation of enterprise-wide governance of IT. Its objective is to help enterprises to integrate information technology with business objectives and strategic management, to harvest value of their information assets and capitalise on IT in an increasingly competitive business and stringent regulatory environments. COBIT is a process oriented framework, which provides management guidelines for monitoring and evaluating an enterprise's IT resources. The framework offers tools responsive to the management needs to control and monitor enterprise's IT capability for its various business processes. The best practice approach provided by COBIT includes such tools as:

- Performance drivers for IT
- Best practices for IT processes and relevant critical success factors
- Elements for performance outcome measurement
- Maturity models instrumental for decision making over capability improvements.

According to COBIT there are 34 IT processes in an enterprise, every process is assigned a level of maturity on a scale of 0–5 from non-existent to optimised or best practice. The maturity levels are used for benchmarking of IT capabilities. IT processes are grouped into four domains, such as:

- Plan and Organise;
- Acquire and Implement
- Deliver and Support
- Monitor and Evaluate.

For each COBIT process a set of control objectives is assigned. For instance, a process *Ensure System Security* which belongs to the domain of *Delivery and Support* will have an objective of *Minimise the impact of security vulnerabilities and incidents*. This objective can be assessed by the number and severity of projected and actual information security breaches, % of compromised cryptographic keys compromised and revoked, number of access rights authorised, revoked, changed, etc. Table 1 summarises selected processes and general control objectives outlined in the COBIT framework.

Domain	High Level Control Objectives
Delivery and Support	Ensure Continuous Service
	Ensure System Security
	Educate and Train Users
	Manage Service Desk and Incidents
	Manage Problems
Monitor and Evaluate	Monitor and Evaluate IT Processes
	Monitor and Evaluate Internal Control Systems
	Ensure Regulatory Compliance
	Provide IT Governance

Table 1 Selected Control Objectives in COBIT.

COBIT takes a best-practice approach to assist managers in establishing appropriate internal controls and aligning control needs, business risks and IT capabilities. The framework ensures that internal control systems support the enterprise's business processes through identification and measurement of individual control activities. These activities comprise of management policies/procedures, business practices and organisational structures.

In addition to other risks that an enterprise can face, COBIT deals with IT security. COBIT Security Baseline comprehensively covers risks of IT security and provides key controls for mitigating technical security risks. As discussed earlier in the unit enterprises, especially trading in the US, have to comply with stringent regulations. COBIT has established itself as the most adopted internal control framework to achieve compliance with the Sarbanes-Oxley Act.

ISO27002: Code of Practice for Information Security Management.

ISO 27002, the updated version of ISO 17799 in 2007, is a *Code of practice for information security management*. It provides the general principles for planning, implementing and improving information security management for businesses. The standard, released by the International Standards Organisation in Geneva, establishes the guidelines on information security control objectives and focuses on information in its various forms.

It is worth mentioning that ISO 27002 addresses security of information in possibly all of its formats including electronic files, paper documents, recordings/media and communications. The standard is comprehensive enough to group information in context of communication into conversations (telephone, mobile, face to face) and messages (email, fax, video and instant messaging).

ISO 27002 suggests initiating implementation of information security management by gathering company's information security requirements. This is done through a process consisting of the following steps:

1. **Perform risk assessment** – aimed at identifying vulnerabilities and threats, as well as establishing their likelihood of them causing an information security breach and its consequences to business objectives.
2. **Study legal requirements** – this step includes addressing the legislative and contractual requirements of all business stakeholders including suppliers, partners, etc. and ensuring that the regulatory requirements specific to the business are met.
3. **Scrutinise requirements internal to business** – through examination of information management processes, methods and practices inside the organisation it is possible to identify information security needs and requirements unique to the organisation.

Having examined the company's information security needs and requirements, ISO 27002 recommends developing/improving the business's *information security program*. This program is built from the best-practices provided by ISO 27002 by selecting practices which meet information security requirements unique to the company. It is recommended to establish core security practices such as:

- “Allocate responsibility for information security
- Develop an information security policy document
- Make sure applications process information correctly
- Manage information security incidents and improvements
- Establish a technical vulnerability management process
- Provide security training and awareness
- Develop a continuity management process”.

The basis of the legal practices in a company's information security program must include at least:

- “Respect intellectual property rights
- Safeguard organisational records
- Protect privacy of personal information” (*ISO 27002: 2005 Introduction*)

ISO 27002 addresses objectives of information security management and recommends controls which should be used to achieve these objectives. For example, the section concerned with *Information Security Incident Management* includes an objective, *Make sure that information system security incidents are promptly reported*. Relevant controls corresponding to this objective will include, *Report information security events using the appropriate management reporting channels* and *Make sure that security events are reported promptly*. In addition to the set of objectives and controls ISO27002 provides notes and guidelines on how to implement controls and apply objectives. For the objective discussed above one of the guidance notes is *Establish a formal information security event reporting procedure*.

The set of best practices comprehensively covers a broad range of management areas from Human Resource Security Management to Information Security Incident Management. Any business organisation is not compelled to implement the entire set of best practices provided in ISO 27002 – only specific practices which help address information security risks or meet a compliance requirement relevant to the organisation need to be applied.

Information Technology Infrastructure Library or ITIL emerged in recognition to an increasing dependence of enterprises on information and IT in order to meet their business needs. Developed by the UK Office of Government Commerce, ITIL comprises of a comprehensive set of good practice documentation for managing IT infrastructure, development and delivery of quality services. Through the use of best practices ITIL provides a systematic approach to the IT Service Management. ITIL has been highly acclaimed and adopted by such large organisations as Barclays Bank, HSBC, British Airways, MOD, etc.

ITIL has focuses on the Service Management and IT support for operational processes and their continual improvement. Over the years since the earlier versions of ITIL it has emerged that Service Management is a wider concept than just supporting the end-product. The later version (version 3) of ITIL now addresses the Service Lifecycle including Strategy, Design, Transition and Operations.



> Apply now

REDEFINE YOUR FUTURE
**AXA GLOBAL GRADUATE
PROGRAM 2015**

redefining / standards 

agence.cdg. © Photomistop



ITIL covers Security Management as a process of embedding information security into organisational management. ITIL Security Management is largely based on the ISO 17799/ISO 27002 standard and treats information security as the process of safeguarding information from risks. It addresses the need to minimise information security risks, often concentrating on the physical security of information assets, in order to achieve and improve IT service management. Specifically, information security breaches and attacks can negatively impact service operations and continuity thereby in ITIL context, degrade service value and benefit.

Various IT control frameworks have emerged over the past decades, enabling organisations to establish robust internal security controls. Their primary objective is to provide a structured system for any business to establish a system of controls as complete as possible fully addressing corporate business processes and infrastructure. The frameworks described here offer substantially different approaches to control and security. However, they are flexible enough to allow any business, from small companies to global enterprises, to adapt and implement only selected components of the framework to the specific needs of a business.

7.6 Exercises

1. Exercise: At a high level view COBIT, ITIL and ISO27002 have a lot in common. However, each of the security and control frameworks discussed in this unit has its unique characteristics. Identify and discuss similarities existing between these frameworks. Summarise and discuss with your colleagues specific differences between them. The following categories may help in your comparative analysis of the frameworks: *technology, implementation, environment, personnel, controls, processes and metrics*.
2. Exercise: Following a number of information security incidents, the UK government conducted a review of its data handling procedures. In a small group, or individually, research some of the news headlines related to data loss incidents. Discuss with your colleagues what security control objectives should be in place to avoid such incidents of data loss in the future.

Compare your suggestions to the information security agenda suggested in the following report **Cabinet Office (2008) Data Handling Procedures in Government: Final Report** <http://www.cabinetoffice.gov.uk/~media/assets/www.cabinetoffice.gov.uk/csia/dhr/dhr080625%20pdf.ashx>

Finally, what security and control framework(s) are recommended to be implemented by this report?

3 Exercise: Research how one of the Fortune 100 companies protects its brand online. Or you may choose one of the following companies:

- Toyota
- Lloyds tsb
- NatWest
- Sony

Identify measures the company of your choice takes to protect and manage its brand online. Collect information about possible threats pertaining to brand that the company experienced in the past.

Also, attempt to list possible benefits and savings obtained through online brand protection. Share your findings with your class colleagues or on the discussion forum as directed by your instructor.



Empowering People. Improving Business.

BI Norwegian Business School is one of Europe's largest business schools welcoming more than 20,000 students. Our programmes provide a stimulating and multi-cultural learning environment with an international outlook ultimately providing students with professional skills to meet the increasing needs of businesses.

BI offers four different two-year, full-time Master of Science (MSc) programmes that are taught entirely in English and have been designed to provide professional skills to meet the increasing need of businesses. The MSc programmes provide a stimulating and multi-cultural learning environment to give you the best platform to launch into your career.

- MSc in Business
- MSc in Financial Economics
- MSc in Strategic Marketing Management
- MSc in Leadership and Organisational Psychology

BI NORWEGIAN BUSINESS SCHOOL

EFMD **EQUIS** ACCREDITED

www.bi.edu/master



References and Further Reading

Attorney General's Office State of Connecticut (2006) *Pfizer Data Breach Letter*. Available at <http://www.ct.gov/ag/lib/ag/consumers/pfizerdatabreachletter.pdf>

Accessed on 10/06/2008

BSI (2006) *ISO/IEC 18028-1:2006 Information Technology. Security Techniques. IT Network Security. Network Security Management*. London: BSI Publications.

Cabinet Office (2008) *Data Handling Procedures in Government: Final Report*

Available from <http://www.cabinetoffice.gov.uk/~media/assets/www.cabinetoffice.gov.uk/csia/dhr/dhr080625%20pdf.ashx> Accessed on 10/06/2008

Calder A. and Watkins S.(2005) *IT Governance: a Manager's Guide to Data Security and BS7799/ISO17799* – 3rd Edition, Kogan Page.

Calder A. (2005) *A Business Guide to Information Security*. Kogan Page.

IT Governance Institute (2008) *COBIT 4.1 Executive Summary and Framework*. Available from: <http://www.isaca.org/AMTemplate.cfm?Section=Downloads&Template=/ContentManagement/ContentDisplay.cfm&ContentID=34172>

Egan M. and Mather T. (2004) *Executive Guide to Information Security: The Threats, Challenges, and Solution*. Symantec Press.

Haag S., Batzan P., Phillips A. (2006) Business Driven Technology. McGraw-Hill.

MarkMonitor (2007) *Gain Control Over the Vast Unknown: Curtailing Online Distribution of Counterfeit and Gary Market Goods*. White Paper.

MessageLabs (2008) *Message Labs Intelligence: April 2008*. Available from: www.messagelabs.com/mlireport/MLI_Report_April_2008.pdf

Accessed on 10/06/2008

Schneier B.(2006) *Secrets and Lies: Digital Security in a Networked World*. Hungry Minds Inc, US.

Silay J. and Koronios A. (2006) *Information Technology: Security and Risk Management*. J. Wiley

Stationery Office (2007) *Personal Internet Security Report*. London: The Stationery Office Available from: <http://www.parliament.the-stationery-office.co.uk/pa/ld200607/ldselect/ldsctech/165/165i.pdf>

Accessed on 10/06/2008

Symantec Corporation (2007) *Symantec Internet Security Threat Report: Trends for January–June 2007*, Vol. 12

Weber Schandwick (2007) *Safeguarding Reputation Survey Results Issue 1: Strategies to Recover Reputation*. Available from: http://164.109.94.76/resources/ws/flash/Safe_Rep_Reputation.pdf Accessed on 10/06/2008

Need help with your dissertation?

Get in-depth feedback & advice from experts in your topic area. Find out what you can do to improve the quality of your dissertation!

Get Help Now



Go to www.helpmyassignment.co.uk for more info



Helpmyassignment



Click on the ad to read more